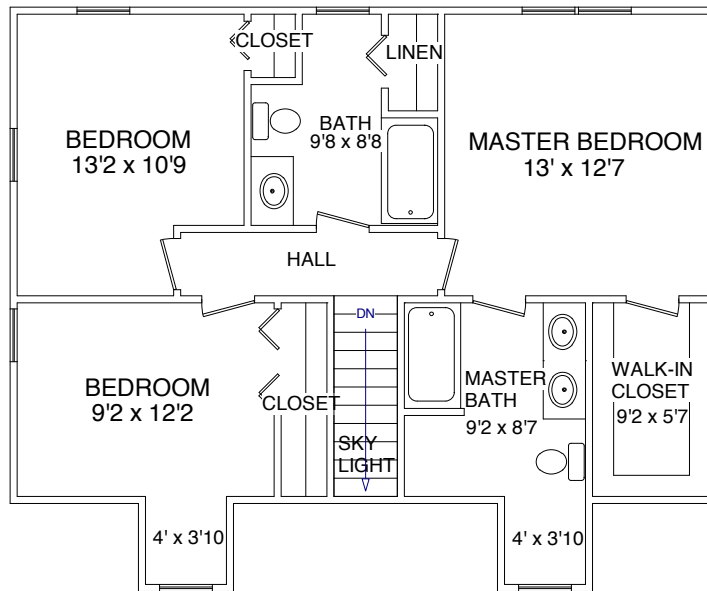


First Floor



Second Floor

These plans are for marketing purposes only and to provide general information about 34 Bond St. Gloucester, MA. Floor plans and dimensions are approximate. Prepared for Ruth Pino of RE/MAX Advantage Real Estate in Gloucester, MA. Plans created by Dimensions New England (978) 794-3993. www.dimensionshomepage.com