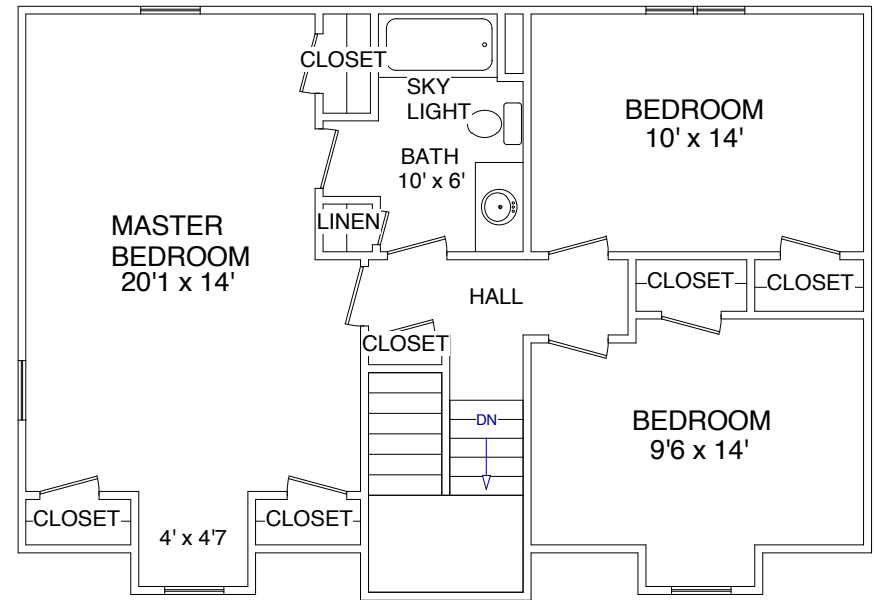
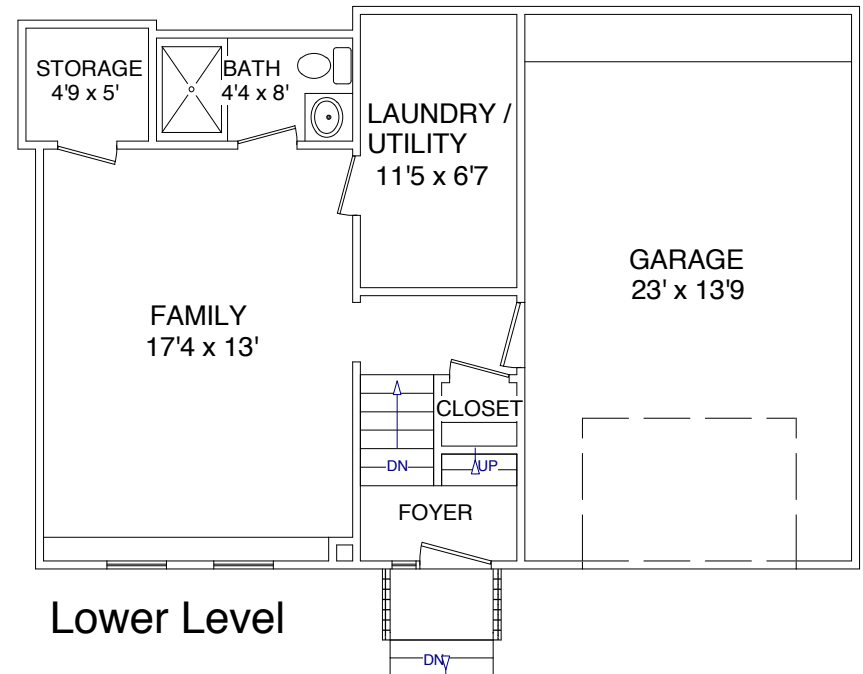


First Floor

These plans are for marketing purposes only and to provide general information about 26 Wheeler St. Gloucester, MA. Floor plans and dimensions are approximate. Prepared for Ruth Pino of RE/MAX Advantage Real Estate in Gloucester, MA. Plans created by Dimensions New England (978) 794-3993. www.dimensionshomepage.com



Second Floor



Lower Level