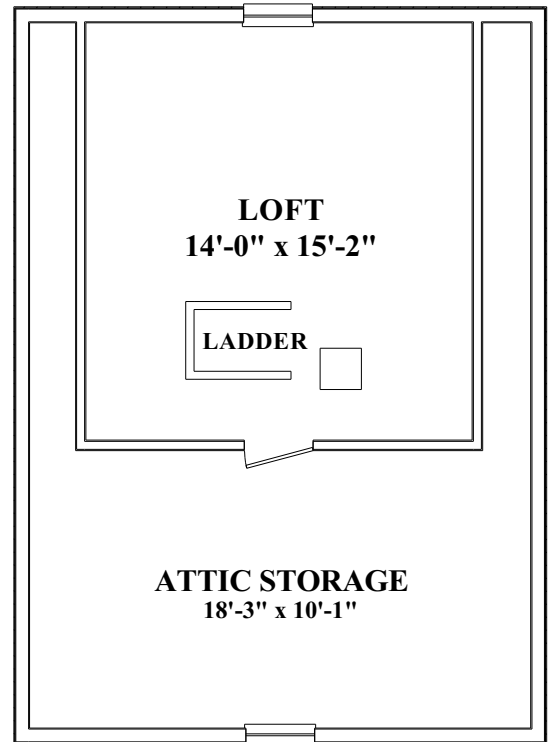
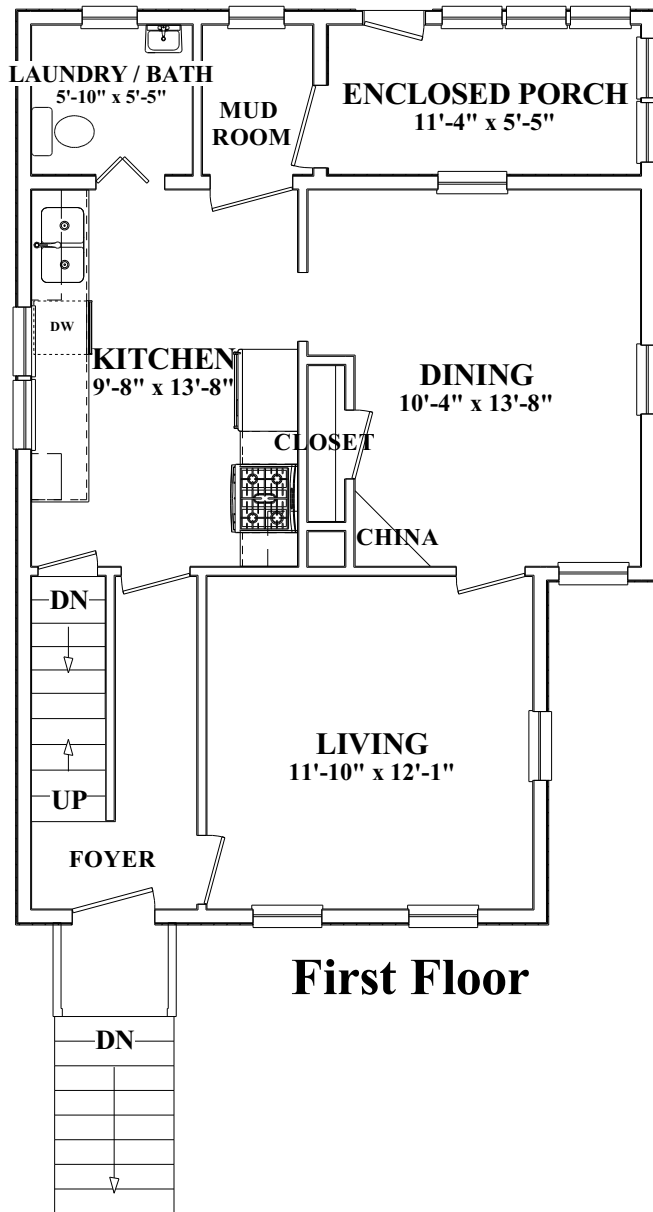
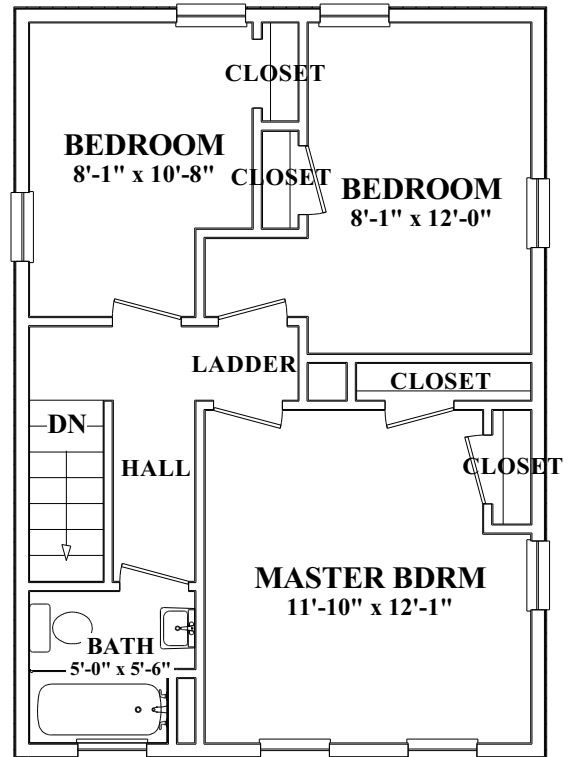


These plans are for marketing purposes only and to provide general information about 25 Acacia St. Gloucester, MA. Floor Plans and dimensions are approximate. Prepared for Ruth Pino of RE/MAX Advantage Real Estate in Gloucester, MA. Plans created by Dimensions New England. www.dimensionshomepage.com (978) 794-3993



Third Floor



Second Floor