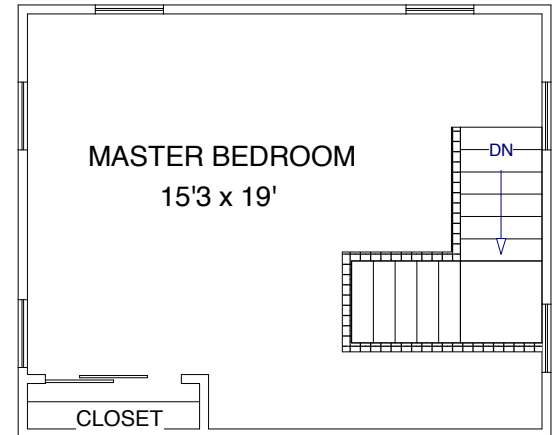


First Floor



Second Floor

These plans are for marketing purposes only and to provide general information about 13 Brooks Rd. Gloucester, MA. Floor plans and dimensions are approximate. Prepared for Ruth Pino of RE/MAX Advantage Real Estate in Gloucester, MA. Plans created by Dimensions New England (978) 794-3993. [www.dimensionshomepage.com](http://www.dimensionshomepage.com)