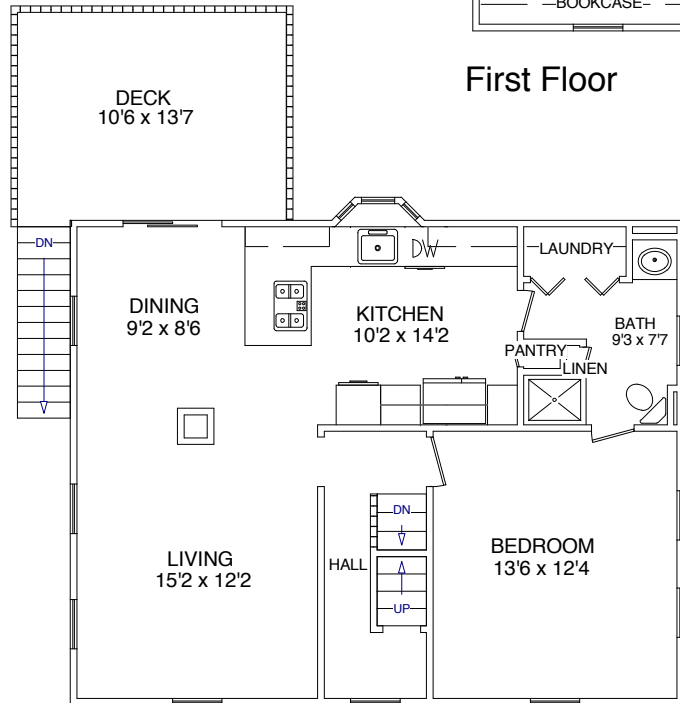
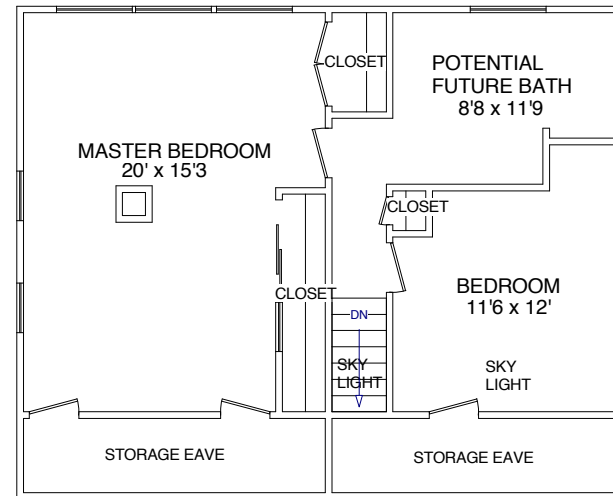


These plans are for marketing purposes only and to provide general information about 10 Andrews St. Gloucester, MA. Floor plans and dimensions are approximate. Prepared for Ruth Pino of RE/MAX Advantage Real Estate in Gloucester, MA. Plans created by Dimensions New England (978) 794-3993. www.dimensionshomepage.com

First Floor



Second Floor



Third Floor