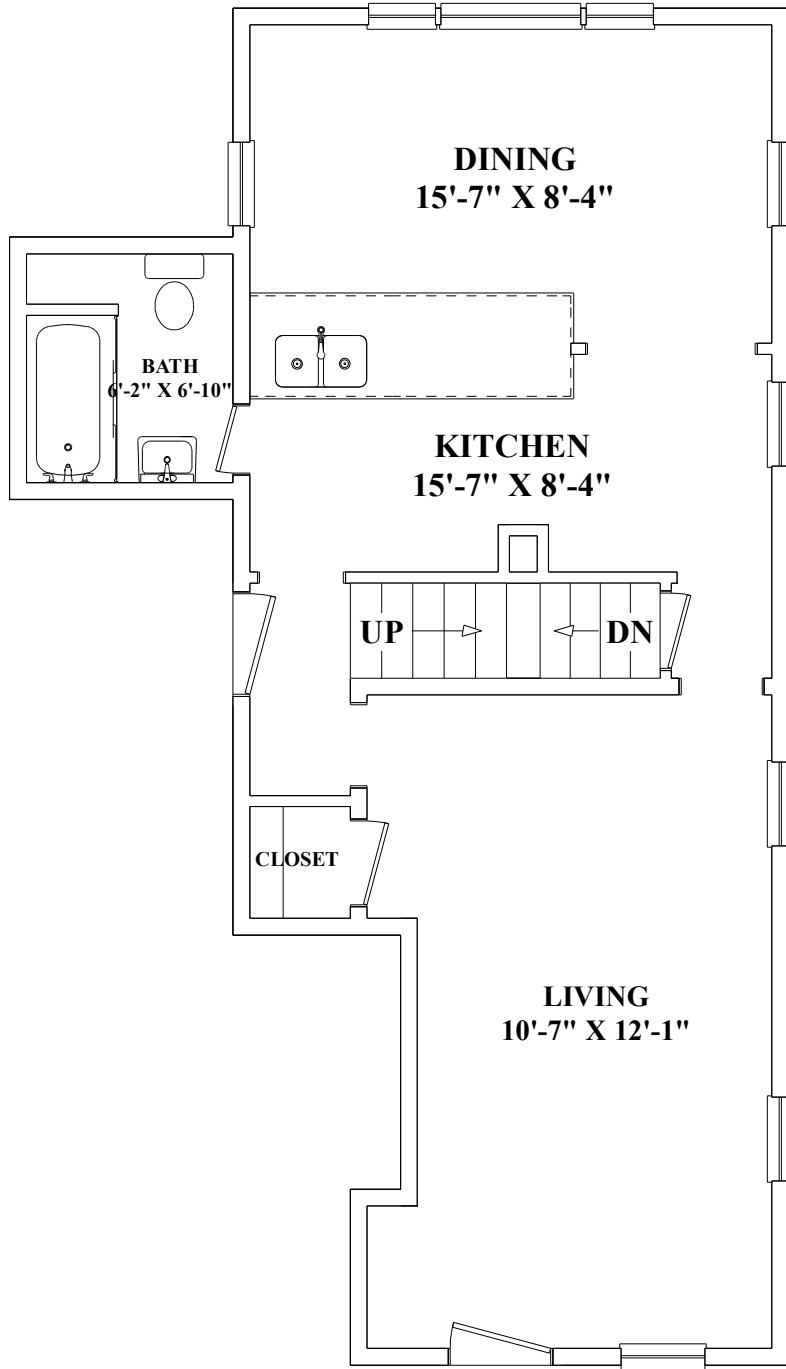
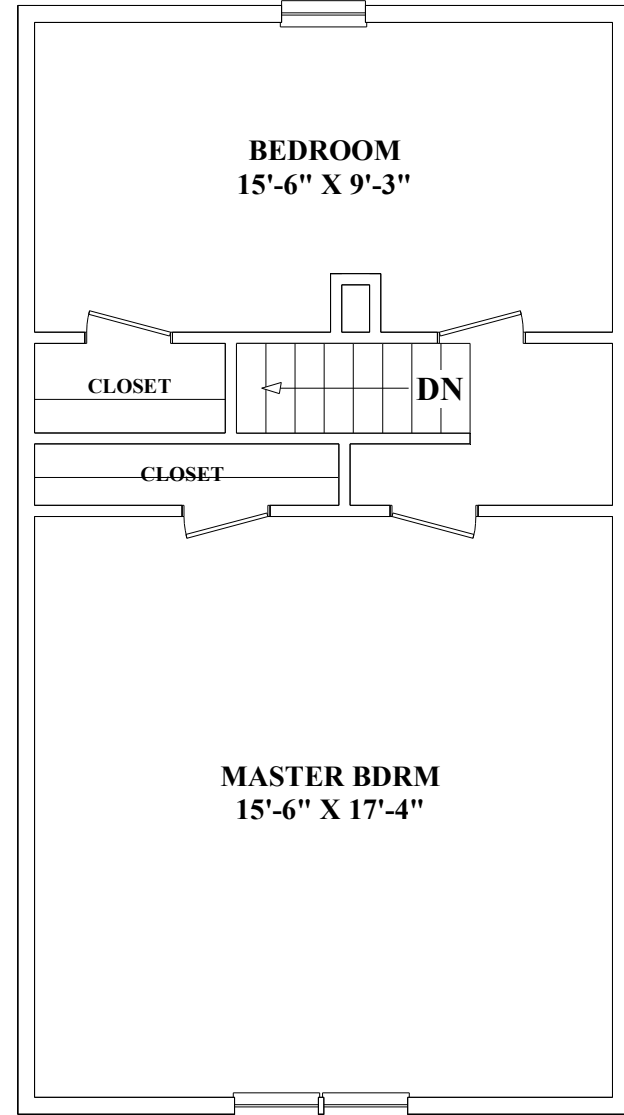


These plans are for marketing purposes only and to provide general information about 1082-B Washington St. Gloucester, MA. Floor Plans and dimensions are approximate. Prepared for Ruth Pino of RE/MAX Advantage Real Estate in Gloucester, MA. Plans created by Dimensions New England. [www.dimensionshomepage.com](http://www.dimensionshomepage.com) (978) 794-3993



**First Floor**



**Second Floor**