

Specifications for 1755 Beacon Street

Unit 2

Kitchen Specifications: Appliances:

REFRIGERATOR	JENN-AIR	LUXURY	JB36NXFXRW	CABINET OVERLAY.
DISHWASHER	JENN-AIR	TriFecta	JDB8500AWX	CABINET OVERLAY
HOOD	JENN-AIR	PYRAMID	JXW8536DS	STAINLESS STL.
COOKTOP	JENN-AIR	LUXURY	JGC763BS	STAINLESS STL.
OVEN	JENN-AIR	LUXURY	JJW3430WS	STAINLESS STL.
MICROWAVE	JENN-AIR	MICRO DRAWER	JUMD2124WS	STAINLESS STL.

Fixture/ Fittings:

SINK	CHEF PRO	ARTISAN	CPUZ-2919-D10	STAINLESS STL.
SINK FAUCET W/ PULL-OUT SPRAY	KOHLER	PURIST	K-7505	STAINLESS STL

Cabinetry: Custom Wood Cabinets, flat door style with perimeter edge detailing
White

Under cabinet Lighting: LED

Hardware: Elements by hardware Resources –Stanton- 7 ½”, Polished Chrome Finish

Master Bath Specifications:

Fixture and Fittings:

RAIN SHOWER	KOHLER	TRADITIONAL ROUND	K-13693	CHROME
RAIN SHOWER ARM	KOHLER		K7392	CHROME
HANDSHOWER	KOHLER	CONTEMPORARY	K-9059	CHROME
BODYSPRAYS (2)	KOHLER	Watertile Round	K-8014	
DIGITAL SHOWER VALVE	KOHLER	DTV DIGITAL	K-99693	
MEDIA INTERFACE	KOHLER	DTV		3 PORT
SHOWER DRAIN	Sioux Chief		863-43NQ	CHROME
SINK FAUCETS (2)	KOHLER	PURIST	K-14406-3-CP	CHROME
TOWEL BAR	KOHLER	PURIST	K-14436-CP	CHROME
T/P HOLDER	KOHLER	PURIST	K-14441-CP	CHROME
SINK (2)	KOHLER	ARCHER	K-2355	WHITE
TOILET	KOHLER	PERSUADE CIRC	K-3753	WHITE

Cabinetry: Custom Wood Cabinets, flat door style with perimeter edge detailing, White

Hardware: Restoration Hardware ‘Grafton Knob’ 1” in Polished Chrome

Lighting: Recessed vanity lighting

Medicine Cabinets: Robern ‘Uplift’, model UC3027FPL, electrified cabinet

Common Bath Specification:**Fixture and Fittings:**

SINK FAUCET	GROHE	EUROSTYLE COSMOPOLITAN	20209	STARLIGHT CHROME
SHOWER SYSTEM	GROHE	EUPHORIA	26177	CHROME
ACCESORIES	GROHE	ESSENTIALS	40344	CHROME
TUB	MAXX	RUBIX	6632	WHITE
SINK	MIRABELLE	BOCA RATON	MIRU1812WH	WHITE
TOILET	KOHLER	PERSUADE CIRC	K-3753	WHITE

Cabinetry: Custom Wood Cabinets, flat door style with perimeter edge detailing, White

Hardware: Restoration Hardware 'Grafton Knob' 1" in Polished Chrome

Lighting: Restoration Hardware 'Cade' Double Sconce mounted horizontally, polished chrome
Custom cut plate mirror

Powder Room Specifications:**Fixture and Fittings:**

SINK FAUCET	GROHE	EUROPLUS	33 170	STARLIGHT CHROME
SINK	Elanti	Elite	EC-9899	WHITE
TOILET	KOHLER	PERSUADE CIRC	K-3753	WHITE

Typical Stone and Tile Specifications:**Master Bathroom:**

Floor Tile: Carrera Marble, Hexagon Mosaic, honed, 2cm, white

Wall tile: Carrera Marble, honed, 6" X 24", white

Vanity top: Quartz, 1 ¼" thick, white, polished finish

Common Bath:

Floor Tile: Porcelanosa, "Victorian Trenzado Marmara", basketweave mosaic, 414587001

Tub Accent Wall and Apron: Porcelanosa, "Retro Blanco" 4" x 8" subway, L131501001

Vanity Top: Carrera Marble, 1 ¼" thick, white, honed finish

Kitchen:

Backsplash: 3" x 12" White Carrera, Honed

Countertops: Perimeter: Jet Mist Granite, Honed.

Island: Montclair 'Danby', honed

Typical Room Finish Specifications:**Baseboard:**

Parlor Level: 1" x 8" wood with AB009, 1 7/8" base cap

Color: Benjamin Moore, Decorators White, semi-gloss

Typical: 1" x 6" wood with AB006 1 3/8" base cap

Color: Benjamin Moore, Decorators White, semi-gloss

Crown:

Living Level: AB 409, 1 ¼" x 7 ½"

Color: Benjamin Moore, Decorators White, semi-gloss

Typical: AB402, 1 1/8" x 5 5/16"

Color: Benjamin Moore, Decorators White, semi-gloss

Window and Door Casing:

Parlor Level: AB129, 4 3/8" casing

Color: Benjamin Moore, Decorators White, semi-gloss

Typical: AB132, 3 5/8" casing

Color: Benjamin Moore, Decorators White, semi-gloss

Wall Finish: Skim coat plaster

Typical: Benjamin Moore, HALO, OC 46, matte

Bathrooms: Benjamin Moore, Chantilly Lace, OC 65, eggshell

Garden Level (except front bedroom): Benjamin Moore, Abalone, 2108-60, matte

Flooring:

5" white oak, select or better, stain tbd, satin finish

General Specifications:

Doors:

Entry & Deck are Simpson, weather-stripping at exterior

Interior: BROSCO 2 Flat Panel Primed Doors with square "Shaker" sticking. (1 ¾" thick)

Hardware on doors:

Interior door hardware to be Emtek Providence Knob with brass rectangular rosette in polished chrome

Bedrooms, bathrooms, and powder rooms have privacy hardware sets

Intercom/buzzer system with corresponding panel at main entry

Decking (if applicable):

Composite decking with black ornamental iron railings

Thermal:

Closed Cell Icynene Insulation at all exterior walls

Mineral Fiber Acoustic Batt Insulation

Windows:

All Pella Architect Series Aluminum Clad Windows, Wood Interiors, Historical Significant, Energy Glass Windows, or equiv.

Bathrooms:

All shower enclosures are custom-made of tempered glass

Stone, tile, and quartz to be used in specified areas

Heating/Cooling:

Small Duct High Velocity System. All finish devices to be white, living, dining and kitchen to receive linear style diffusers. Heating is provided with wall mounted combination gas boiler and domestic hot water heater, DX cooling is provided with an associated outside air cooled condensing unit. Unit to have 3 zones, each with a wall mounted NEST programmable thermostat.

Sound:

Audio prewire for speakers in Master Bedroom / Living & Dining Areas.

Misc:

Alarm System with contacts at doors, accessible windows, and one motion detector
LED recessed Lighting installed throughout (4")

Closets:

All closets to receive shelf and pole.

Electrical:

New distribution panels for each unit.

Lighting Controls for all interior lights shall be dimmable apart from closets, utility rooms, mechanical, and laundry rooms.

Lighting and Receptacles to be Lutron Decora style with screwless faceplates

Electric Radiant In floor heating in master bathroom

Fireplace:

Boulevard Lo Rider Natural Gas Vent Free Fireplace with custom wood mantel and absolute black surround and hearth, honed

***Developer reserves the right to replace any material with materials of equal or greater value.**

Specifications for 1755 Beacon Street

GUEST BATHROOM SPECIFICATIONS

EUROSTYLE COSMOPOLITAN

Three-hole basin mixer

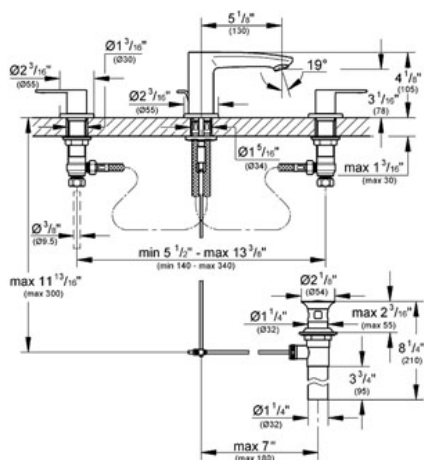
S-Size

MODEL # 20209

Pure Freude an Wasser



GROHE America, Inc | 200 North Gary Avenue, Suite G, Roselle, IL 60172
Phone: +1 (800) 444-7643 | Fax: +1 (800) 225-2778 | us-customerservice@grohe.com



Product Description:
Three-hole basin mixer
S-Size

Standard Specification:

- GROHE StarLight® finish
- GROHE EcoJoy® technology for less water and perfect flow
- GROHE QuickFix™ installation system with centering support
- Spout with SpeedClean-flow control
- 3/4" ceramic cartridges (90° turn)
- 1 1/4" pop-up waste set
- Pressure resistant flexible connection hoses
- Between middle-body and side valves
- Union nut with 7/16" drilling
- Max Flow Rate 1.5 gpm (5.7 L/min)

Applicable Codes & Standards:

- Energy Policy Act of 1992
- NSF 61
- ASME A112.18.1/CSA B125.1
- US Federal and State material regulations
- EPA WaterSense®
- ICC/ANSI A117.1

Color:

□ 20209 002 GROHE StarLight®
Chrome

EUPHORIA SYSTEM 180

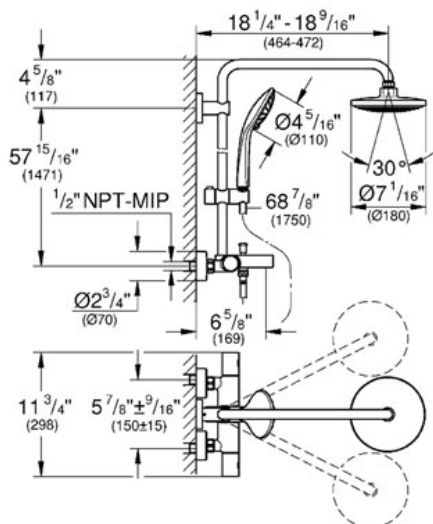
Thermostatic Shower System with tub spout

MODEL # 26177

Pure Freude an Wasser



GROHE America, Inc | 200 North Gary Avenue, Suite G, Roselle, IL 60172
Phone: +1 (800) 444-7643 | Fax: +1 (800) 225-2778 | us-customerservice@grohe.com



Product Description:

Thermostatic Shower System with tub spout

Standard Specification:

- GROHE EcoJoy® technology for less water and perfect flow

- GROHE StarLight® finish

- GROHE DreamSpray® perfect flow

- 17 3/4" horizontal swivel shower arm

- Head shower 1 spray (27 492)

- Rain

- Chrome plated spray face

- With ball joint

- Rotation angle $\pm 15^\circ$

- Hand shower 2 sprays (27 238)

- Rain, SmartRain

- GROHE SprayDimmer

- Adjustable in height with gliding element

- Max FLOW Rate 2.5 gpm

- SpeedClean anti-lime system

- Rotation cone for Twistfree-function

- Wall installation

- GROHE CoolTouch®

- Exposed thermostatic temperature control with SafeStop® at 100°F / 38°C

- Includes manual tub/shower diverter

- 6 5/8" Tub Spout reach

- 62 1/2" Overall rail height

- Tub Spout Flow Rate: 5.3 gpm (20 L/min) at 45 PSI

- Switch between hand shower and shower head shower via built-in diverter

- Bar with adjustable height hand shower holder

Applicable Codes & Standards:

- Energy Policy Act of 1992

- ASME A112.18.1/CSA B125.1

Color:

- 26177 000 chrome



UNDERMOUNT LAVATORY

Dimensions: 18-11/16" x 12-3/16" (interior)

Dimensions: 21-1/16" x 14-9/16" (exterior)

Product Codes:

MIRU1812WH (white)

MIRU1812BS (biscuit)

- Vitreous china with overflow
- Cutout template included
- Installation, operating, care and maintenance instructions included
- 1 year limited warranty
- Meets ASME Standard: A112.19.2M
- cUPC/IAPMO listed
- 6-5/16" internal basin depth
- 5-1/4" Basin depth to overflow



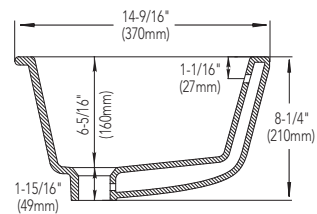
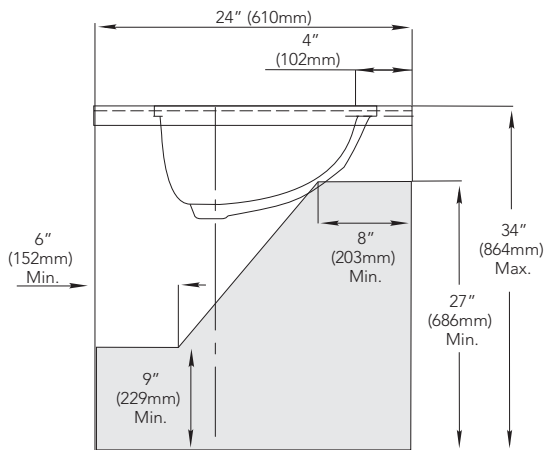
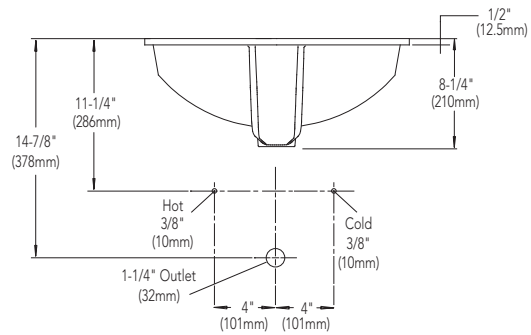
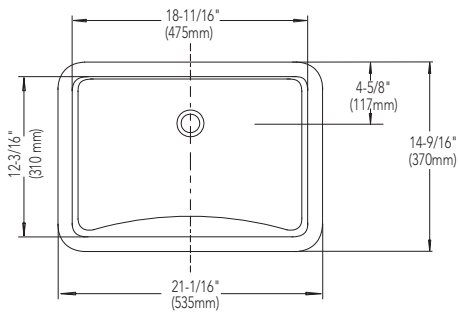
Mirabelle®

UNDERMOUNT LAVATORY

Product Codes:

MIRU1812WH (white)

MIRU1812BS (biscuit)



Note: All dimensions and specifications are nominal and may vary +/- 1/4". Use actual products for accuracy in critical situations.



Persuade® Circ

Dual Flush Toilet

K-3753

Features

- Vitreous china.
- Two-piece toilet.
- Comfort Height® Elongated bowl.
- Dual Flush flushing system.
- Includes top-mount dual flush trip lever.
- 1.6 gpf (6.0 lpf) or 1.0 gpf (3.8 lpf).
- Fully skirted trapway.
- 12" (305 mm) rough-in.
- Supply line included.
- 4-1/2" (114 mm) x 5-3/4" (146 mm) water area.
- 28-5/8" (727 mm) x 14-3/16" (360 mm) x 33-3/4" (857 mm).
- Floor mount / Floor outlet.

Recommended Accessories

K-4650 Toilet Seat
K-4774 Toilet Seat
K-7659 Angle Stop
K-7668 Straight Stop

Components

Product includes:

K-4353 Toilet Bowl
K-4442 Toilet Tank

Additional included component/s: Tank cover, Dual flush push buttons, Installation kit, Installation template, Tank accessory pack, and Toilet seat.



Codes/Standards







ASME A112.19.2/CSA B45.1
ASME A112.19.14
DOE - Energy Policy Act 1992
EPA WaterSense®

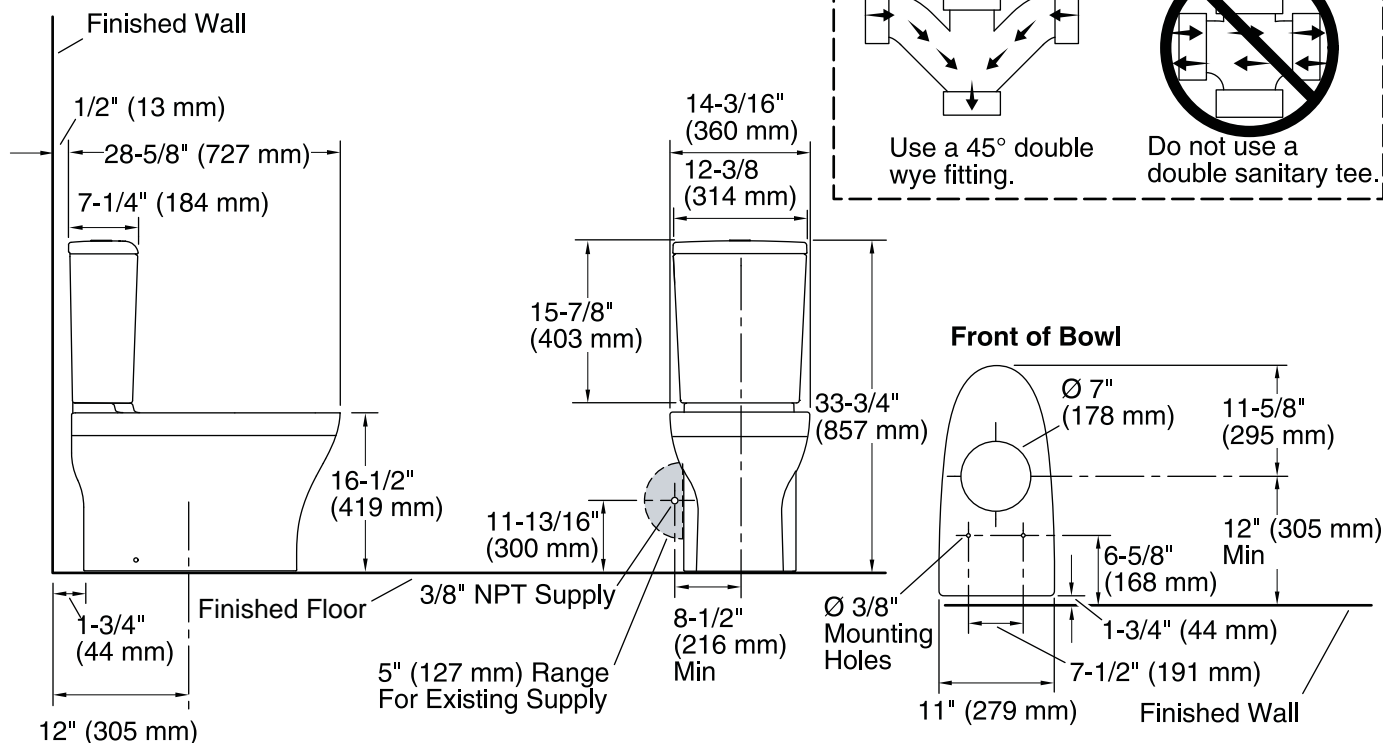
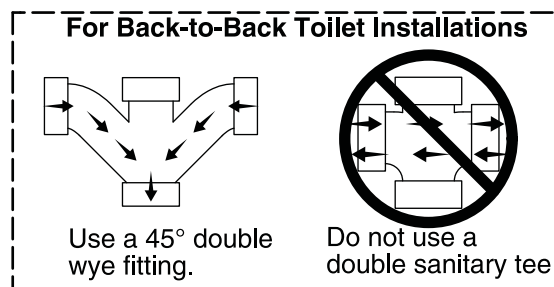
KOHLER® One-Year Limited Warranty

See website for detailed warranty information.

Available Color/Finishes

Color tiles intended for reference only.

Color	Code	Description
	0	White
	96	Biscuit
	47	Almond
	NY	Dune
	95	Ice™ Grey
	7	Black Black™



Technical Information

All product dimensions are nominal.

Toilet type:	Two-piece
Bowl shape:	Elongated front
Trap passageway:	2" (51 mm)
Water Consumption	
Full:	1.6 gpf (6 lpf)
Water surface size:	4-1/2" x 5-3/4" (114 mm x 146 mm)
Rim to water surface:	8-1/2" (216 mm)
Rough-in:	12" (305 mm)
Seat-mounting holes:	5-1/2" (140 mm)

Notes

Install this product according to the installation guide.

IMPORTANT! The rough-in must be 12" (305 mm) or more from the base of the wall or baseboard. Install or relocate the supply and outlet as necessary to conform to rough-in dimensions.

If this toilet is installed in new construction, install a new supply stop following the dimensions in the diagram.

In installations with the supply stop installed, the existing supply stop may need to be relocated if it is less than 8-1/2" (216 mm) from the centerline of the toilet. Dry fit the toilet to confirm if the supply stop needs to be relocated.

The supplied hose will extend roughly 6" (152 mm) from the toilet. If the supplied hose does not reach the supply stop, a longer supply hose may be used.

For back-to-back toilet installations: Use only a 45° double wye fitting.

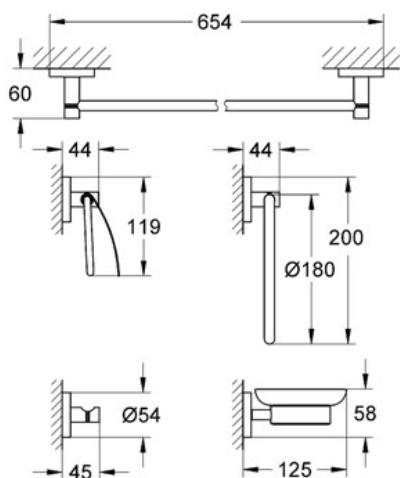
ESSENTIALS Accessory Set

MODEL # 40344

Pure Freude an Wasser

GROHE

GROHE America, Inc | 200 North Gary Avenue, Suite G, Roselle, IL 60172
Phone: +1 (800) 444-7643 | Fax: +1 (800) 225-2778 | us-customerservice@grohe.com



Product Description: Accessory Set

Standard Specification:

Consisting of:

- Towel ring (40 365)
- 24" towel holder (40 366)
- Robe hook (40 364)
- Toilet paper holder with cover (40 367)
- Soap dish with holder (40 369 / 40 368)

Color:

- ☐ 40344 000
- ☐ 40344 EN0 Brushed Nickel



Verdera™
Mirrored Cabinet
K-99000

Features

- Anodized aluminum construction with a durable rust-free and chip-free finish.
- Three adjustable glass shelves.
- Full-overlay mirrored door.
- Mirrored interior.
- Two-way adjustable hinges with 108-degree opening capability for easy cabinet access.
- Can be installed with left- or right-hand swing.
- Includes mounting hardware for surface or recessed installation.
- Requires K-99012 side mirror kit (sold separately) for surface mount installation.

Material

- Anodized aluminum.

Recommended Accessories

K-99012 Side Mirror Kit
K-99661-15 Medicine Cabinet Surround
K-99662-15 Medicine Cabinet Surround
K-99663-15 Medicine Cabinet Surround

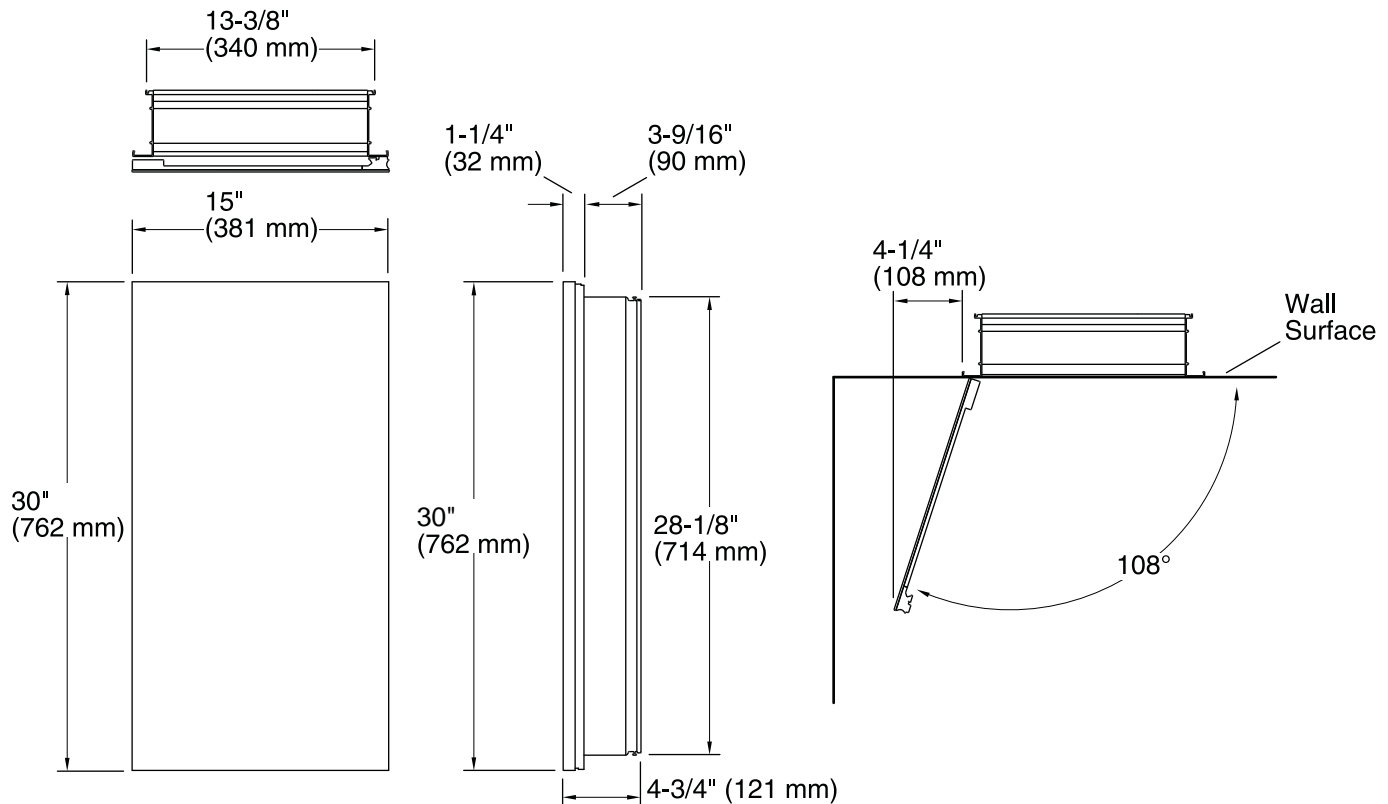


Codes/Standards

None Applicable

KOHLER® One-Year Limited Warranty

See website for detailed warranty information.



Technical Information

All product dimensions are nominal.

Notes

Install this product according to the installation guide.

CAUTION: Risk of electric shock. Electrical wiring may need to be relocated.

For recess mounting, the wall cavity must be framed and cabinet secured to framing studs. Reroute any electrical wires or water supply piping from the wall cavity. If you encounter drain or vent piping, or if your wall is load-bearing, consult a professional before proceeding.

CAUTION: Risk of property damage. For surface mounting, use anchors (not provided) rated for the loaded weight of this product. Refer to the anchor manufacturer's instructions.

When determining the height of the cabinet, ensure the mirrored door will clear all obstacles (such as a faucet). A minimum distance of 3" (76 mm) is required.

This cabinet is designed for either right or left door swing. Check for obstructions.

Specifications for 1755 Beacon Street

JUNIOR BATHROOM SPECIFICATIONS

EUROSTYLE COSMOPOLITAN

Three-hole basin mixer

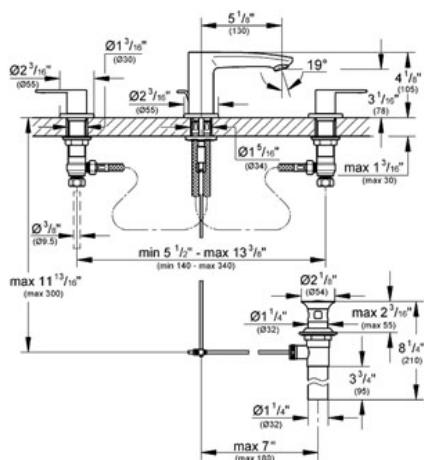
S-Size

MODEL # 20209

Pure Freude an Wasser



GROHE America, Inc | 200 North Gary Avenue, Suite G, Roselle, IL 60172
Phone: +1 (800) 444-7643 | Fax: +1 (800) 225-2778 | us-customerservice@grohe.com



Product Description:
Three-hole basin mixer
S-Size

Standard Specification:

- GROHE StarLight® finish
- GROHE EcoJoy® technology for less water and perfect flow
- GROHE QuickFix™ installation system with centering support
- Spout with SpeedClean-flow control
- 3/4" ceramic cartridges (90° turn)
- 1 1/4" pop-up waste set
- Pressure resistant flexible connection hoses
- Between middle-body and side valves
- Union nut with 7/16" drilling
- Max Flow Rate 1.5 gpm (5.7 L/min)

Applicable Codes & Standards:

- Energy Policy Act of 1992
- NSF 61
- ASME A112.18.1/CSA B125.1
- US Federal and State material regulations
- EPA WaterSense®
- ICC/ANSI A117.1

Color:

□ 20209 002 GROHE StarLight®
Chrome



UNDERMOUNT LAVATORY

Dimensions: 18-11/16" x 12-3/16" (interior)

Dimensions: 21-1/16" x 14-9/16" (exterior)

Product Codes:

MIRU1812WH (white)

MIRU1812BS (biscuit)

- Vitreous china with overflow
- Cutout template included
- Installation, operating, care and maintenance instructions included
- 1 year limited warranty
- Meets ASME Standard: A112.19.2M
- cUPC/IAPMO listed
- 6-5/16" internal basin depth
- 5-1/4" Basin depth to overflow



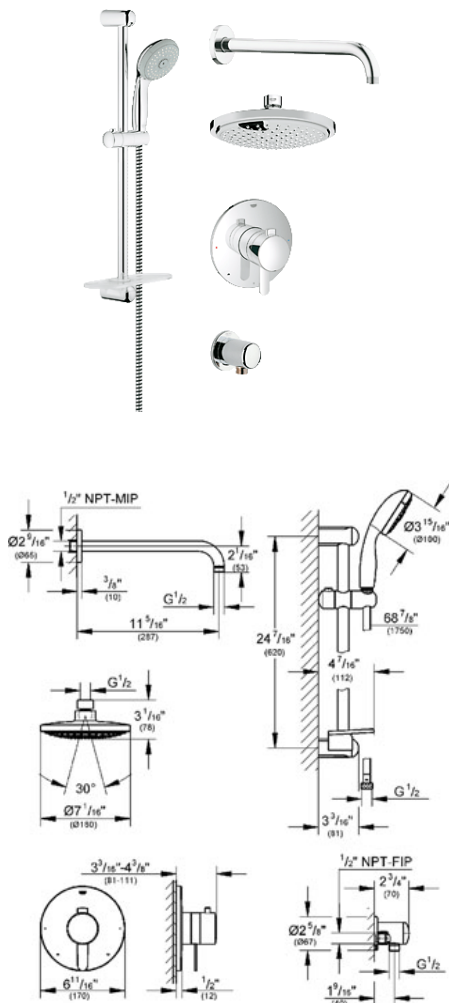
GROHFLEX SHOWER SET

MODEL # 35051

Pure Freude an Wasser



GROHE America, Inc | 200 North Gary Avenue, Suite G, Roselle, IL 60172
Phone: +1 (800) 444-7643 | Fax: +1 (800) 225-2778 | us-customerservice@grohe.com



Product Description:

Standard Specification:

Cosmopolitan PBV

- Shower combination
 - Consisting of:
 - Euphoria® Cosmopolitan shower head 7 1/16" (27 492)
 - Rainshower™ 12" shower arm (28 577)
 - GroheFlex® shower/hand shower PBV trim & valve (19 881)
 - New Tempesta® IV shower set (28 436)
 - Relaxa® wall union (28 672 000 / 28 627 EN0)
- Requires GroheFlex® Universal Rough-In Box (35 026)

Applicable Codes & Standards:

- Energy Policy Act of 1992
- ASME A112.18.1/CSA B125.1

Color:

□ 35051 000 chrome

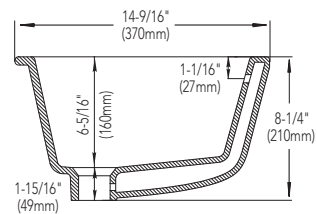
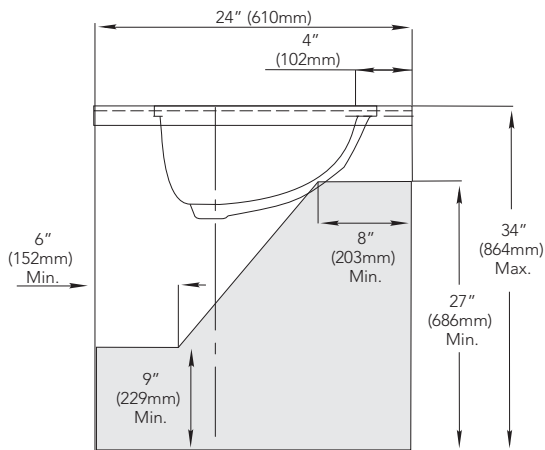
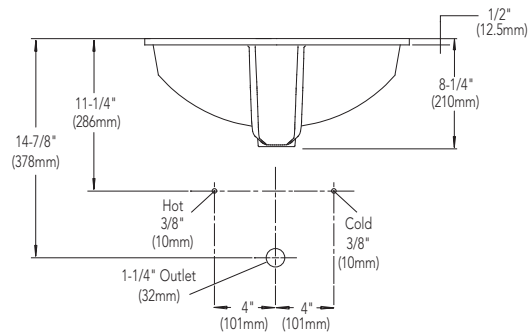
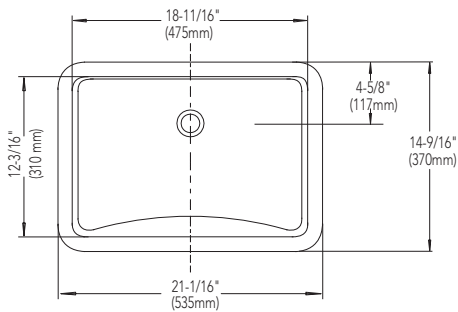
Mirabelle®

UNDERMOUNT LAVATORY

Product Codes:

MIRU1812WH (white)

MIRU1812BS (biscuit)



Note: All dimensions and specifications are nominal and may vary +/- 1/4". Use actual products for accuracy in critical situations.



Persuade® Circ

Dual Flush Toilet

K-3753

Features

- Vitreous china.
- Two-piece toilet.
- Comfort Height® Elongated bowl.
- Dual Flush flushing system.
- Includes top-mount dual flush trip lever.
- 1.6 gpf (6.0 lpf) or 1.0 gpf (3.8 lpf).
- Fully skirted trapway.
- 12" (305 mm) rough-in.
- Supply line included.
- 4-1/2" (114 mm) x 5-3/4" (146 mm) water area.
- 28-5/8" (727 mm) x 14-3/16" (360 mm) x 33-3/4" (857 mm).
- Floor mount / Floor outlet.

Recommended Accessories

K-4650 Toilet Seat
K-4774 Toilet Seat
K-7659 Angle Stop
K-7668 Straight Stop

Components

Product includes:

K-4353 Toilet Bowl
K-4442 Toilet Tank

Additional included component/s: Tank cover, Dual flush push buttons, Installation kit, Installation template, Tank accessory pack, and Toilet seat.



Codes/Standards





ASME A112.19.2/CSA B45.1
ASME A112.19.14
DOE - Energy Policy Act 1992
EPA WaterSense®

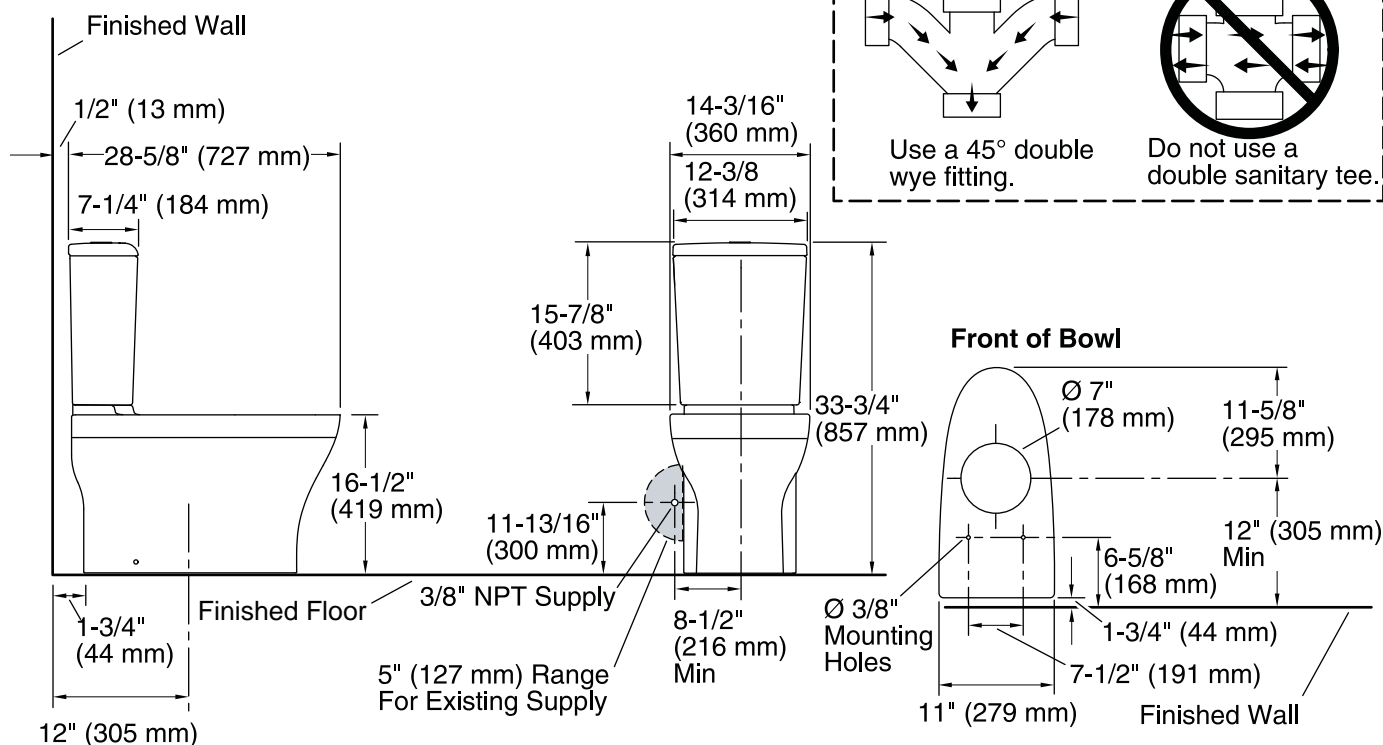
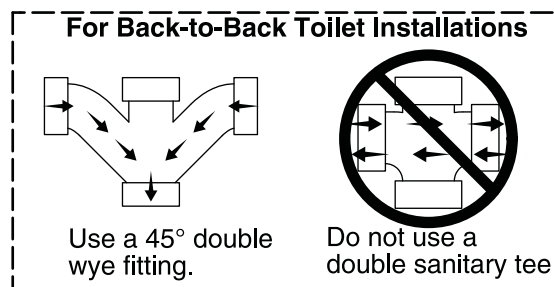
KOHLER® One-Year Limited Warranty

See website for detailed warranty information.

Available Color/Finishes

Color tiles intended for reference only.

Color	Code	Description
	0	White
	96	Biscuit
	47	Almond
	NY	Dune
	95	Ice™ Grey
	7	Black Black™



Technical Information

All product dimensions are nominal.

Toilet type:	Two-piece
Bowl shape:	Elongated front
Trap passageway:	2" (51 mm)
Water Consumption	
Full:	1.6 gpf (6 lpf)
Water surface size:	4-1/2" x 5-3/4" (114 mm x 146 mm)
Rim to water surface:	8-1/2" (216 mm)
Rough-in:	12" (305 mm)
Seat-mounting holes:	5-1/2" (140 mm)

Notes

Install this product according to the installation guide.

IMPORTANT! The rough-in must be 12" (305 mm) or more from the base of the wall or baseboard. Install or relocate the supply and outlet as necessary to conform to rough-in dimensions.

If this toilet is installed in new construction, install a new supply stop following the dimensions in the diagram.

In installations with the supply stop installed, the existing supply stop may need to be relocated if it is less than 8-1/2" (216 mm) from the centerline of the toilet. Dry fit the toilet to confirm if the supply stop needs to be relocated.

The supplied hose will extend roughly 6" (152 mm) from the toilet. If the supplied hose does not reach the supply stop, a longer supply hose may be used.

For back-to-back toilet installations: Use only a 45° double wye fitting.

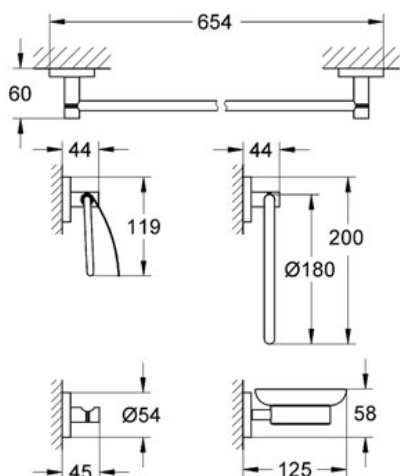
ESSENTIALS Accessory Set

MODEL # 40344

Pure Freude an Wasser

GROHE

GROHE America, Inc | 200 North Gary Avenue, Suite G, Roselle, IL 60172
Phone: +1 (800) 444-7643 | Fax: +1 (800) 225-2778 | us-customerservice@grohe.com



Product Description: Accessory Set

Standard Specification:

Consisting of:

- Towel ring (40 365)
- 24" towel holder (40 366)
- Robe hook (40 364)
- Toilet paper holder with cover (40 367)
- Soap dish with holder (40 369 / 40 368)

Color:

- ☐ 40344 000
- ☐ 40344 EN0 Brushed Nickel

Specifications for 1755 Beacon Street

KITCHEN SPECIFICATIONS



Overview

36", 6-Burner Gas Cooktop

JGC7636BS

With a combined 78,000 BTUs of power, this luxury Jenn-Air® gas cooktop is an exceptionally robust six-burner, 36-inch cooktop. Its Simmer/Melt Burner reaches as low as 800 BTU, while an extremely low profile allows for near-flush countertop installation.

Finishes



Stainless Steel



Features

Low-Profile Design

With an extremely low profile, you can have a minimal look —nearly flush with the countertop — for an integrated transition to the cooktop.

Euro-Style Stainless Design

With design elegance, the stainless steel accents in this suite combine modern aesthetics and classic flair for an upscale look.

18,000 BTU Brass PowerBurner

Enjoy the elegance of brass and robust heat from this PowerBurner that's necessary for high-powered cooking techniques, whether searing a steak, stir-frying vegetables or rapidly boiling water.

Additional Features



Overview

Pyramid Style Canopy Wall Hood, 36" JXW8536DS

This 36" Pyramid Style Wall-Mount Canopy Hood gracefully accents any sophisticated kitchen that follows a more traditional layout, brilliantly illuminated by LED task and ambient lighting. A 600-CFM high-performance blower combines with perimetric extraction to efficiently and effectively clean the air while remaining exceptionally quiet.

Finishes



Stainless Steel



Features

Perimetric Extraction

This sophisticated design is not only attractive, it is the secret behind the ventilation system's exceptional performance and quiet operation.

600 CFM Blower

Rapidly rids the air of smoke and steam so the air is fresh and clean.

Auto Sense

Automatically turns the ventilation system on and adjusts power as needed.

Additional Features

78,000 BTU Rating

High-powered cooking surfaces are not a problem for this ventilation system.

LED Task Lighting

Optimally positioned lights illuminate the entire cooking surface, giving a clear view of food as it cooks.

LED Ambient Lighting

Upward-facing ambient LED lighting gently illuminates the kitchen, adding a distinctive touch to this ventilation system

Capacitive Touch Controls

Intuitive controls are activated by a light touch, look elegant and allow for easy cleaning.

Boost Function

Clears the air quickly by raising the fan speed to its highest possible setting for 10 minutes, ridding the kitchen of smoke and steam.

Premium Craftsmanship

Each individually crafted system is welded and polished to produce a sleek, seamless look.

Dishwasher-Safe Metal Filter

Easy-to-clean filters that maintain optimal ventilation performance by keeping ductwork clean.

Quiet Operation

Sound-reducing technology minimizes the sound of the ventilation system to conversation-friendly levels.

Recirculating Installation Option

Allows for installation of a premium ventilation system without ductwork.

Sleep Mode

Automatically turns the ventilation system off when cooking is completed.

“Clean Filter” Indicator

A convenient indicator light reminds you when it's time to clean the dishwasher-safe filters.

3 Fan Speed Settings

Provides a range of ventilation power to accommodate your precise cooking needs.

Specifications

Configuration and Overview	Controls	Dimensions
Hood Type: Wall Canopy	Control Type: Electronic	Width: 36
Venting Type: Exterior or Recirculating	Touch	Depth: 19 11/16
	Number of Fan Speeds: 3	Height: 5
	Removable Grease Filter:	
	Yes	
	Night Light: LED	
	Task Light: LED	

Warranty**Extended Service Plan****Benefits Include:**



Overview

Single Wall Oven with V2™ Vertical Dual-Fan Convection System, 30"

JJW3430WS

This Jenn-Air® luxury single wall oven features the Jenn-Air® Culinary Center, which calibrates the perfect cooking time and exact temperature based on your inputs and preferences. The 7-inch full-color touch-anywhere LCD display makes it easy to select cooking functions like the convenient No Preheat mode.

Finishes



Floating Glass Black



Euro-Style Stainless



Features

Jenn-Air® Culinary Center

The Jenn-Air® Culinary Center customizes each cooking cycle based on a variety of your preferences to create your perfect meal. No other brand provides full color

V2™ Vertical Dual-Fan Convection System

The V2™ Vertical Dual-Fan Convection System provides unbeatable performance with innovative cooking features and

7-Inch Full-Color Touch-Anywhere LCD Display

This luxury double wall oven's stylish LCD control panel features dynamic touch-screen technology, which allows you to



Overview

Integrated Built-In Bottom-Freezer Refrigerator, 36"

JB36NXFXRW

This Jenn-Air® luxury integrated built-in refrigerator achieves a sleek, seamless look (with optional custom panels that blend into cabinetry), while maintaining an optimal environment to keep ingredients exquisitely fresh.

Finishes



Custom Overlay Right Hand Door Swing



Features

Customizable with Overlay Panels or Suite-Coordinating Panel Kit, not included

Customize the exterior with panel kits designed to blend with cabinetry, for a fully integrated look. Panels can be easily updated.

Fully Integrated and Flush Design

This integrated built-in bottom-freezer refrigerator fits beautifully into any environment, blending into 25-inch custom cabinetry with concealed hinges and trim pieces for a truly seamless appearance. It's a feature designers will appreciate.

Precision Temperature Management™ System

Electronically controlled sensors monitor the environment, automatically adjusting temperatures to maintain the ideal level for optimal food preservation.

Additional Features



Overview

Under Counter Microwave Oven with Drawer Design, 24"

JMD2124WS

This sleek Jenn-Air® under counter microwave oven with drawer design gives you added flexibility in your kitchen design. At the touch of a button, the drawer automatically opens and closes. And auto sensor cooking determines the optimal power level and cooking time for exceptional results.

Finishes



Euro-Style Stainless



Features

Drawer Design

This stylish drawer design, which installs directly within under counter cabinetry, gives you more options for creating a beautiful, open kitchen space.

Auto Sensor Microwave Cooking

Rather than cooking for a preset time, this intuitive sensor detects humidity released by food as it cooks and determines the precise cooking time and power level for each dish, for optimal doneness.

Keep Warm™ Option

Ideal for entertaining, the Keep Warm™ option holds temperatures at a low setting to keep finished menu items warm until they are ready to be served or while other items finish cooking.

Additional Features



Overview

TriFecta™ Dishwasher JDB8500AWX

The combination of our TriFecta™ wash system and Precision Dry® Plus option delivers dishes that are clean and dry when the cycle ends. And, the SteamFinish option gently bathes stemware in steam for an exceptional shine.

Finishes



Floating Glass White



Panel Ready



Floating Glass Black



Features

TriFecta™ Wash System

The TriFecta™ wash system features alternating wash action, three-stage filtration, a variable-speed motor and pressurized wash arms to deliver improved

Precision Dry® Option

Precision Dry® option chooses the optimum dry cycle based on the type of load washed, ensuring dry dishes at the end of the cycle,

43 dBA Quiet System

43 dBA Quiet System allows the dishwasher to operate at just 43 dBA and includes the TriFecta™ wash system and variable-speed motor

Front Load Washer

EIFLW50L IW

Featuring IQ-Touch™ Electronic Controls



Island White
EIFLW50L IW



Optional Luxury-Glide®
Touch-2-Open™
Pedestal Shown



Fast Wash Cycle¹

Only 18 minutes to wash.



Perfect Balance® System

No other washer has less vibration². State-of-the-art technology keeps even oversized wash loads balanced for smooth, quiet operation. Perfect for installation upstairs—even near bedrooms.



Eco-Friendly

Gentle on the environment and your clothes. Washers are up to 164% more energy efficient³ and use up to 65% less water⁴.



"My Favorite" Setting

A setting you can customize to meet your needs, so the option you want is available at the touch of a button.



27" ELECTRIC FRONT LOAD WASHER

Capacity D.O.E. (Cu.Ft.)	4.2
Features	
Signature Soft-Arc Door Design	Yes
IQ-Touch™ Electronic Controls with LCD Display	Yes
Perfect Balance® System	Yes
Luxury-Quiet™ Sound System	Yes
Luxury-Design® Lighting	Yes
Touch-2-Open™/(Close) Door	Yes
Luxury-Glide® Touch-2-Open™/(Close) Dispenser Drawer	Yes
AquaLux™ Wash System	Yes
Integral Water Heater	Yes
Stainless Steel Wash Drum	Yes
Automatic Temperature Control	Yes
Automatic Water Level Adjustment	Yes
Auto Prewash Detergent Dispenser (Liquid/Powder)	Yes
Auto Bleach Dispenser (Liquid Only)	Yes
Auto Detergent Dispenser (Liquid/Powder)	Yes
Auto Fabric Softener Dispenser (Liquid Only)	Yes
Tumble Speed (RPM)	48-52 Variable
Spin Speed (RPM)	1,200
Reversible Door	
Adjustable Leveling Legs	Yes
ENERGY STAR®	Yes
NSF® Certified	Sanitize

Cycles	
Fast Wash, My Favorite (1), Deep Clean Sanitize, Heavy Duty, Whites, Colors, Normal, Casual, Delicates, Hand Wash, Spin Only	11
Options	
Temperature Selections	5
Spin Speed Selections	5
Soil Level Selections	5
Delay Start (Hours)	14
End-of-Cycle Chime	Adjustable

Installation Options	
Freestanding, Under Counter*, Stacked (Under Dryer), Pedestal, Hidden (In Closet), Second Floor	Yes

Accessories	
Luxury-Glide® Touch-2-Open™/(Close) Pedestal – Island White – PN# EPWD15IW	Optional
Dryer Stacking Kit – PN# STACKIT4X	Optional
Drain Hose Extension Kit – PN# 137098000	Optional
Mobile Home Installation Kit – PN# 137067200	Optional

Specifications	
Color –	Island White
Product Dimensions –	IW
Height (Without 15" Pedestal)	38"
(With 15" Pedestal)	53"
Width	27"
Depth (to Center of Arc Not Including Hose)	31-1/2"
(with 90° Door Open)	50-5/8"
Power Supply/	Top Right Rear/
Water Inlet Location	Top Left Rear
Voltage Rating	120V/60Hz/15A
Connected Load (kW Rating) @ 120 Volts†	1.2
Watts @ 120 Volts	1,000
Amps @ 120 Volts	12
Shipping Weight (Approx.)	247 Lbs.

*Side-by-Side units in under-counter installation require custom-built countertop and/or cabinetry.

†For use on adequately wired 120V, dedicated circuit having 2-wire service with a separate ground wire. Appliance must be grounded for safe operation.

NOTE: Always consult local and national electric & plumbing codes. Refer to Product Installation Guide for detailed installation instructions on the web at www.electroluxappliances.com. Specifications subject to change.

¹Fast time based on smallest load/Fast Wash and Fast Dry cycles selected for various load compositions.

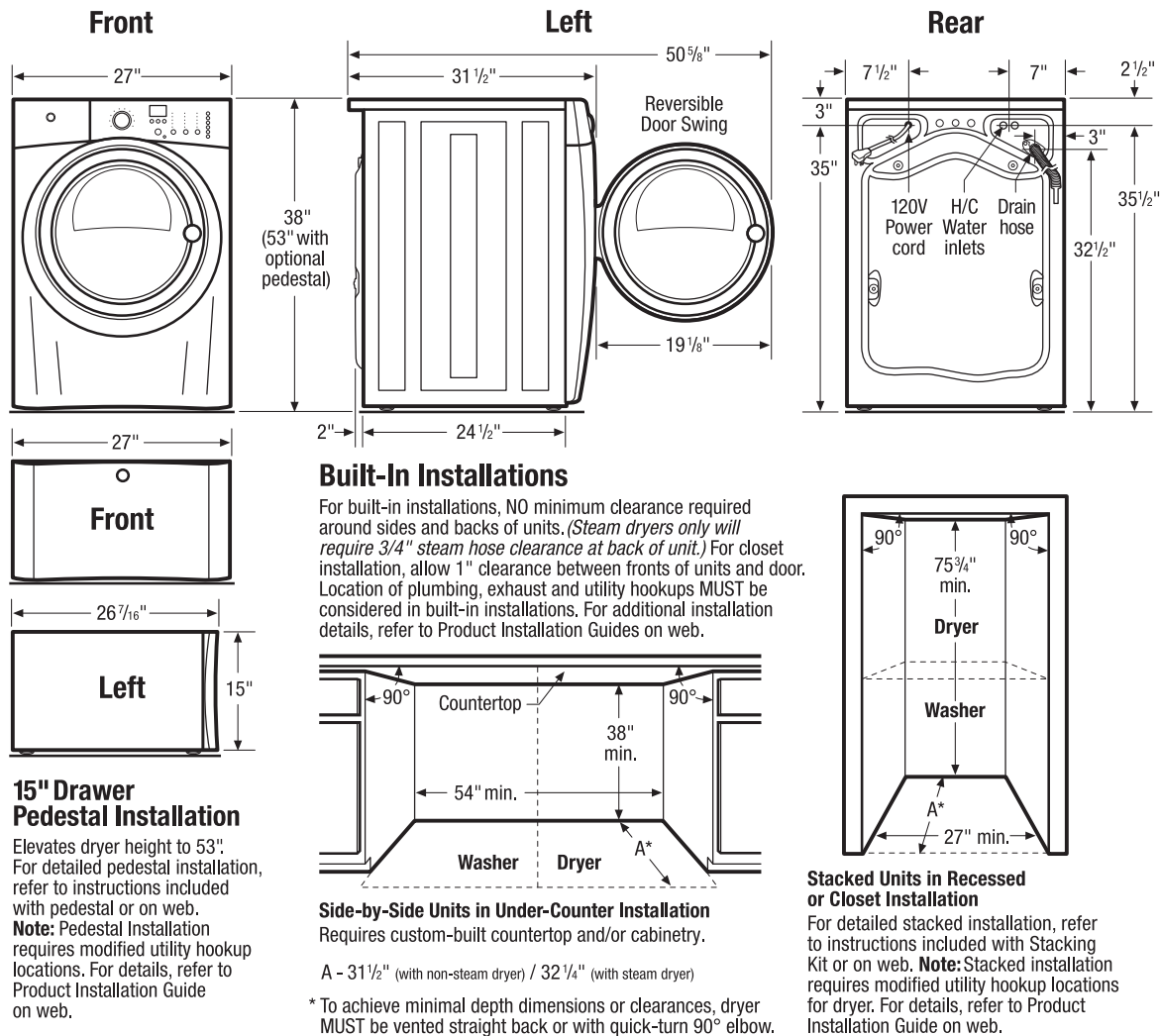
²As tested on conventional wood floor construction with vinyl floor covering.

³Energy efficiency based on current D.O.E. Federal minimum standard for washers based on MEF.

⁴Water savings based on D.O.E. ENERGY STAR® energy-savings calculator.

Front Load Washer

EIFLW50L IW



Front Load Washer Specifications

- Product Weight – 237 Lbs.
- An electrical supply with grounded three-prong receptacle is required. The power supply circuit must be installed in accordance with current edition of National Electrical Code (ANSI/NFPA 70) and local codes & ordinances. (Do not use same circuit as dryer.)
- Voltage Rating – 120V/60Hz/15 Amps
- Amps @ 120 Volts = 12 Amps
- Connected Load (kW Rating) @ 120 Volts = 1.2kW
- Equipped with 120V 3-wire power supply cord, approx. 60" long.
- Always consult local and national electric & plumbing codes.
- To maximize detergent effectiveness, ambient temperature should never be below 60°F.
- Can be installed alone, with or without optional 15" drawer pedestal, or stacked beneath matching Electrolux Dryer, which requires installation of optional dryer stacking kit. (For installation details, refer to instructions included with optional pedestal or stacking kit or on web.)
- Can be built in with matching Electrolux Dryer in under-counter, recessed or closet installation. Installations requiring countertop and/or cabinetry will require custom building. (Refer to Built-In Installations on this page for cutout dimensions. For additional installation details, refer to Product Installation Guide on web.)
- Closet installation requires vented door with 2 unobstructed louvered openings, minimum 60 sq.in. each, located 3" from top and bottom of door. Full-length 120 sq.in. opening also acceptable. Allow 1" clearance between door and fronts of units.
- Do NOT install in area exposed to dripping water or outdoor weather conditions, or where gasoline or other flammables, including automobiles, are kept or stored.
- Floor MUST be solid with 1" maximum slope. To ensure vibration or movement does not occur, reinforcement of floor may be necessary. Do NOT install on carpeted surface.
- Leveling legs supplied to level washer properly and reduce excessive noise and vibration.
- H/C water faucets MUST be installed within 42" of washer's water inlet and MUST be 3/4" garden hose type, to connect to 48-1/2" inlet hoses.
- Water pressure MUST be between 30 and 120 psi with NOT more than 10 psi pressure difference between hot and cold.
- Drain required with standpipe diameter of 1-1/4" min. and height of 24" min./96" max. above floor, capable of eliminating 17 gallons per minute. Attached 59" drain hose can reach 79"-high standpipe.

Note: For planning purposes only. Refer to Product Installation Guide on the web at electroluxappliances.com for detailed instructions.

Optional Accessories

- Drawer Pedestals – Island White (PN# EPWD15IW).
- Dryer Stacking Kit – (PN# STACKIT4X).
- Drain Hose Extension Kit – (PN# 137098000).
- Mobile Home Installation Kit – (PN# 137067200).

Electrolux Major Appliances, N.A.

USA • 10200 David Taylor Drive • Charlotte, NC 28262 • 1-877-4electrolux (1-877-435-3287) • electroluxappliances.com
CANADA • 5855 Terry Fox Way • Mississauga, ON L5V 3E4 • 1-800-265-8352 • electroluxappliances.ca

EIFLW50L 12/11

© 2011 Electrolux Home Products, Inc.



High standards of quality at Electrolux Home Products, Inc. mean we are constantly working to improve our products. We reserve the right to change specifications or discontinue models without notice.

Electric Front Load Dryer

EIED50L IW

Featuring IQ-Touch™ Electronic Controls



Optional Luxury-Glide®
Touch-2-Open™
Pedestal Shown



Largest Capacity Dryer¹

Dry the most in one load with 8.0 cu. ft. capacity.



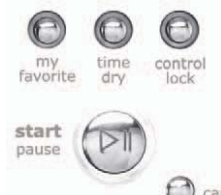
Fast Dry Cycle²

Eighteen minutes to dry.



IQ-Touch™ Controls

The IQ-Touch™ control panel offers all the cycles/options you need—including a “My Favorite” setting.



“My Favorite” Setting

A setting you can customize to meet your needs, so the option you want is available at the touch of a button.

27" ELECTRIC FRONT LOAD DRYER

Capacity D.O.E.	8.0 Cu. Ft.
Features	
Signature Soft-Arc Door Design	Yes
IQ-Touch™ Electronic Controls with LCD Display	Yes
Gentle Tumble™ Dry System	Yes
Luxury-Quiet™ Sound System	Yes
Luxury-Design® Lighting	Yes
Luxury-Dry™ System	Yes
Touch-2-Open™/(Close) Door	Yes
Exact Dry™ Moisture Sensor	Yes
Painted Dryer Drum	Yes
Tumble Speed (RPM)	50
Reversible Door	Yes
Adjustable Leveling Legs	Yes
NSF® Certified	Yes
Cycles	
Fast Dry, My Favorite (1), Heavy Duty, Bulky/Bedding, Mixed Load, Towels, Normal, Casual, Delicate, Touch Up, Timed Dry	11
Options	
Temperature Selections	5
Electronic Auto Dry System	Yes
Manual Timed Dry Selections	5
End-of-Cycle Chime	Adjustable
Installation Options	
Freestanding, Under Counter*, Stacked (Above Washer), Pedestal, Hidden (In Closet), Second Floor, 4-Way Dryer Venting	Yes
Accessories	
Luxury-Glide® Touch-2-Open™/(Close) Pedestal – Island White – PN# EPWD15IW	Optional
Dryer Stacking Kit – PN# STACKIT4X	Optional
Mobile Home Installation Kit – PN# 137067200	Optional
Drying Rack – PN# 137453000	Optional
Specifications	
Color – Island White	IW
Product Dimensions –	
Height (Without 15" Pedestal)	38"
(With 15" Pedestal)	53"
Width	27"
Depth (to Center of Arc Including Door and Exhaust) (with 90° Door Open)	31-1/2" 50-5/8"
Maximum Exhaust Duct Length³ (Ft.)	125
Power Supply Connection Location	Bottom Right Rear
Voltage Rating	240V/60Hz/25A
Connected Load (kW Rating) @ 240 Volts	6.0
Amps @ 240 Volts	25
Heating Element @ 240 Volts (Watts)	5,400
Shipping Weight (Approx.)	140 Lbs.

*Side-by-Side units in under-counter installation require custom-built countertop and/or cabinetry.

NOTE: Always consult local and national electric codes. Refer to Product Installation Guide for detailed installation instructions on the web at www.electroluxappliances.com.

Specifications subject to change.

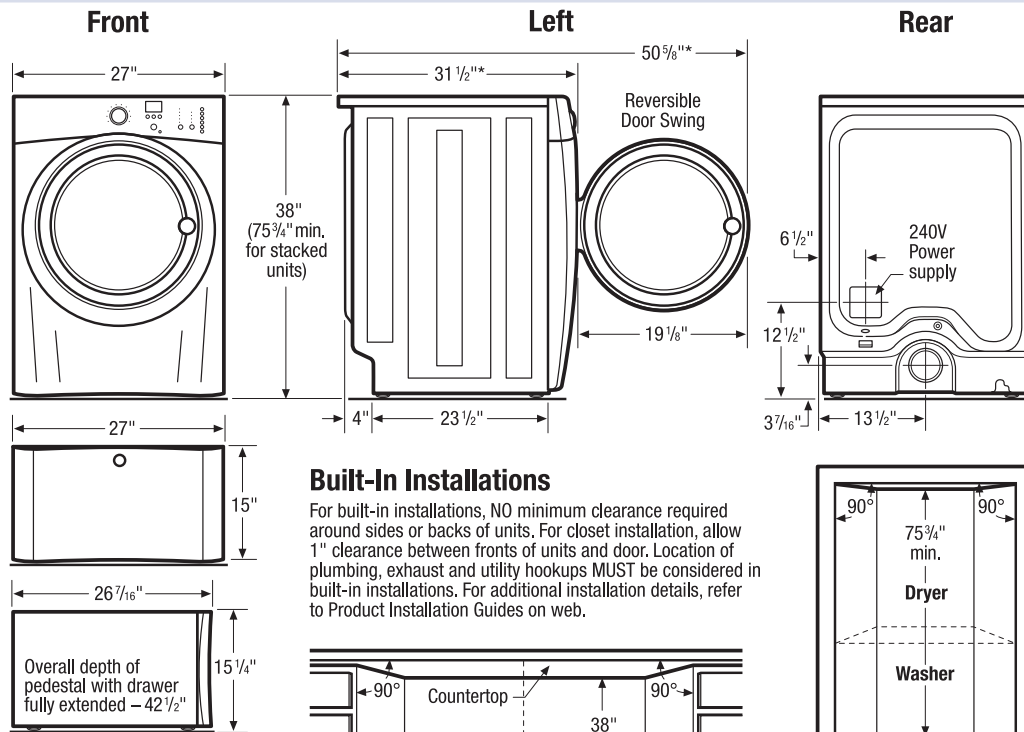
¹Based on manufacturer specifications.

²Fast time based on smallest load / Fast Wash and Fast Dry cycles selected for various load compositions.

³Rigid metal duct preferred, semi-rigid optional and allow deductions for elbows and vents. Refer to Installation Guide on web for additional information.

Electric Front Load Dryer

EIED50L IW

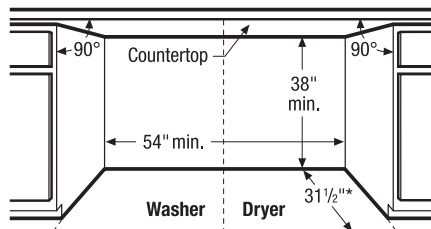


15" Drawer Pedestal Installation

Elevates dryer height to 53". For detailed pedestal installation, refer to instructions included with pedestal or on web. **Note:** Pedestal Installation requires modified utility hookup locations. For details, refer to Product Installation Guide on web.

Built-In Installations

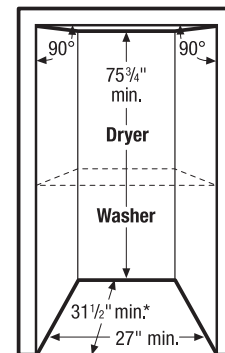
For built-in installations, NO minimum clearance required around sides or backs of units. For closet installation, allow 1" clearance between fronts of units and door. Location of plumbing, exhaust and utility hookups **MUST** be considered in built-in installations. For additional installation details, refer to Product Installation Guides on web.



Side-by-Side Units in Under-Counter Installation

Requires custom-built countertop and/or cabinetry.

* To achieve minimal depth dimensions or clearances, dryer **MUST** be vented straight back or with quick-turn 90° elbow.



Stacked Units in Recessed or Closet Installation

For detailed stacked installation, refer to instructions included with Stacking Kit or on web. **Note:** Stacked installation requires modified utility hookup locations for dryer. For details, refer to Product Installation Guide on web.

Electric Dryer Specifications

- Product Weight – 130 Lbs.
- Voltage Rating – 240V/60Hz/25 Amps
- Single phase 3- or 4-wire cable, 240 Volt, 60 Hertz AC only electrical supply with ground required on separate circuit fused on both sides of line. (Do not use same circuit as washer.)
- Connected Load (kW Rating) @ 240 Volts = 6.0kW
- Amps @ 240 Volts = 25 Amps
- Dryer **MUST** employ a 3-conductor NEMA 10-30 type SRDT or 4-conductor NEMA 14-30 type SRDT or ST (as required), rated at 240 volt AC minimum, 30 amp power supply cord marked for use with clothes dryers (not supplied).
- Grounding through neutral link prohibited in specific applications and certain locales, requiring use of 4-wire system. (For detailed electrical requirements, refer to Product Installation Guide on web.)
- Always consult local and national electric codes.
- Can be installed alone, with or without optional 15" drawer pedestal, or stacked above matching Electrolux Washer, which requires installation of optional dryer stacking kit. (For installation details, refer to instructions included with optional pedestal or stacking kit or on web.)
- Can be built in with matching Electrolux Washer in under-counter, recessed or closet installation. Installations requiring countertop and/or cabinetry will require custom building. (Refer to Built-In Installations on this page for cutout dimensions. For additional installation details, refer to Product Installation Guide on web.)
- Closet installation requires vented door with 2 unobstructed louvered openings, minimum 60 sq.in. each, located 3" from top and bottom of door. Full-length 120 sq.in. opening also acceptable. Allow 1" clearance between door and fronts of units.

- Do NOT install in area exposed to dripping water or outdoor weather conditions, or where gasoline or other flammables, including automobiles, are kept or stored.
- Floor **MUST** be solid with 1" maximum slope. To ensure vibration or movement does not occur, reinforcement of floor may be necessary. Do NOT install on carpeted surface.
- Dryer **MUST** exhaust to outside of building, NOT into any concealed space.
- Dryer equipped for 4-way venting and approved for up to 125-foot-equivalent of duct length, determined by length of run and number of elbows needed.
- Exhaust installation requires minimum 4"-diameter rigid or semi-rigid metal duct with approved, unobstructed vent hood having swing-out damper(s). If installing rigid metal duct (preferred), do not exceed MAXIMUM venting run length of 125 ft., allow deductions for elbows and vents. If installing semi-rigid metal duct, do not exceed MAXIMUM venting run length of 8 ft., always allow deductions for elbows and vents (Refer to Product Installation Guide on web for additional information). Do NOT use flexible plastic or metal foil duct and use shortest run possible.
- Leveling legs supplied to level dryer properly and reduce excessive noise and vibration.

Note: For planning purposes only. Refer to Product Installation Guide on the web at electroluxappliances.com for detailed instructions.

Optional Accessories

- Drawer Pedestals – Island White (PN# EPWD15IW).
- Dryer Stacking Kit – (PN# STACKIT4X).
- Mobile Home Installation Kit – (PN# 137067200).
- Drying Rack – (PN# 137453000).



Electrolux Major Appliances, N.A.

USA • 10200 David Taylor Drive • Charlotte, NC 28262 • 1-877-4electrolux (1-877-435-3287) • electroluxappliances.com
CANADA • 5855 Terry Fox Way • Mississauga, ON L5V 3E4 • 1-800-265-8352 • electroluxappliances.ca

EIED50L 01/13

© 2013 Electrolux Home Products, Inc.

High standards of quality at Electrolux Home Products, Inc. mean we are constantly working to improve our products. We reserve the right to change specifications or discontinue models without notice.

Specifications for 1755 Beacon Street

MASTER BATHROOM SPECIFICATIONS

Features

- Metal construction.
- Brass valve bodies.
- Pop-up drain with lift rod and tailpiece.
- 5-1/2" (140 mm) spout reach.
- Stationary spout.
- For 8" (203 mm) or 16" (406 mm) centers.
- Quarter-turn washerless ceramic disc valves.
- Cross handles.
- Low gooseneck spout.
- 1.5 gal/min (5.7 l/min) maximum flow rate [max at 60 psi (4.14 bar)].

Optional Accessories

1160593



ADA

Codes/Standards






ASME A112.18.1/CSA B125.1
NSF 61
NSF 372
DOE - Energy Policy Act 1992
EPA WaterSense®
ADA
ICC/ANSI A117.1
All applicable US Federal and State material regulations

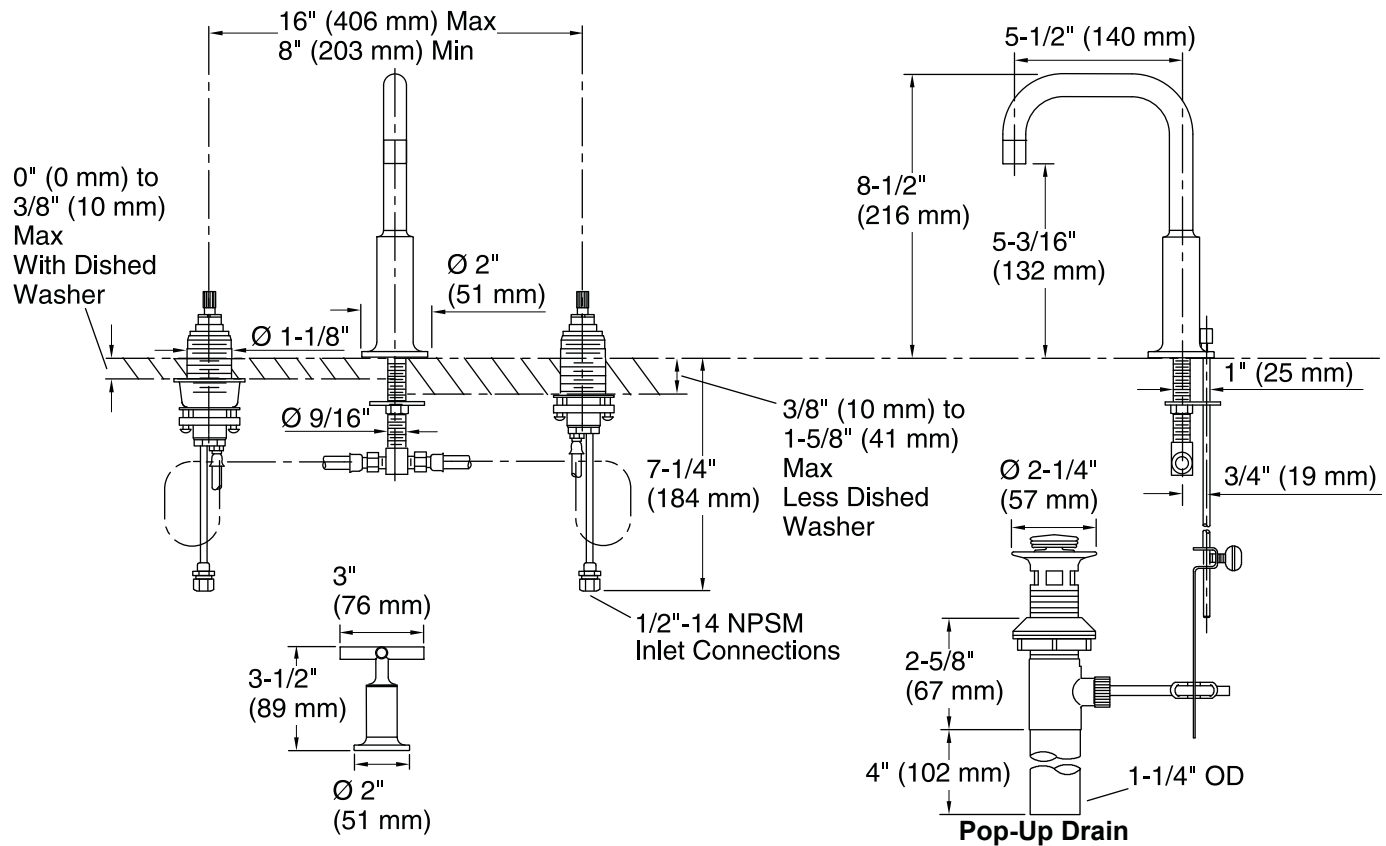
KOHLER® Faucet Lifetime Limited Warranty

See website for detailed warranty information.

Available Color/Finishes

Color tiles intended for reference only.

Color	Code	Description
	CP	Polished Chrome
	SN	Vibrant® Polished Nickel
	BGD	Vibrant® Moderne Brushed Gold
	BN	Vibrant® Brushed Nickel
	BV	Vibrant® Brushed Bronze



Technical Information

All product dimensions are nominal.

Spout reach: 5-1/2" (140 mm)

Drain included: YES

Drain tailpiece included: YES

Faucet:

Flow rate: 1.5 gal/min (5.7 l/min)

Pressure: 60 psi (4.1 bar)

Notes

Install this product according to the installation guide.

ADA compliant when installed to the specific requirements of these regulations.

Features

- Vitreous china.
- Under-mount
- With overflow.
- Without faucet holes.
- Includes 1193643 clamp assembly.
- 19-7/8" (505 mm) x 15-5/16" (389 mm) x 7-1/2" (191 mm)

Recommended Accessories

K-8998 P-Trap

Components

Additional included component/s: Basin clamp assembly.



ADA

Codes/Standards

ASME A112.19.2/CSA B45.1

ADA

ICC/ANSI A117.1











All applicable US Federal and State material regulations

KOHLER® One-Year Limited Warranty

See website for detailed warranty information.

Available Color/Finishes

Color tiles intended for reference only.

Color	Code	Description
	0	White
	96	Biscuit
	47	Almond
	NY	Dune
	95	Ice™ Grey
	G9	Sandbar
	33	Mexican Sand™
	K4	Cashmere
	58	Thunder™ Grey
	7	Black Black™

Features

- Digital interface with easy to read configurable color touch screen.
- Can control shower outlets, audio output, chromotherapy, steam and lighting, allowing user to control their experience from a single interface .
- Can control up to two digital valves to provide two different shower temperatures.
- Six user definable presets provide easy to use selection of saved favorite settings.
- Integrated pre-programmed temperature and hydrotherapy programs for spa like showering experiences.
- System warm up & pause feature.
- Duration/Countdown Timer.
- Up to three interfaces can be connected to each system for alternate locations and applications.
- Easy clean water resistant casing.
- Easy installation and system set up using laptop/tablet to access integrated web pages .

Material

- Premium material construction for durability and reliability.

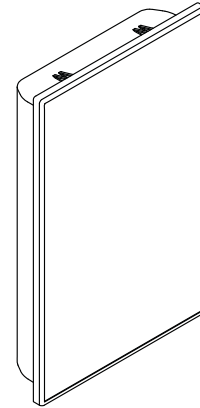
Installation

- Surface mount installation.

Required Accessories

K-99694 Interface Mounting Bracket
K-99695

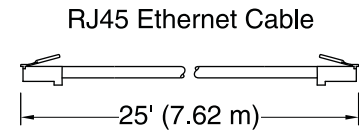
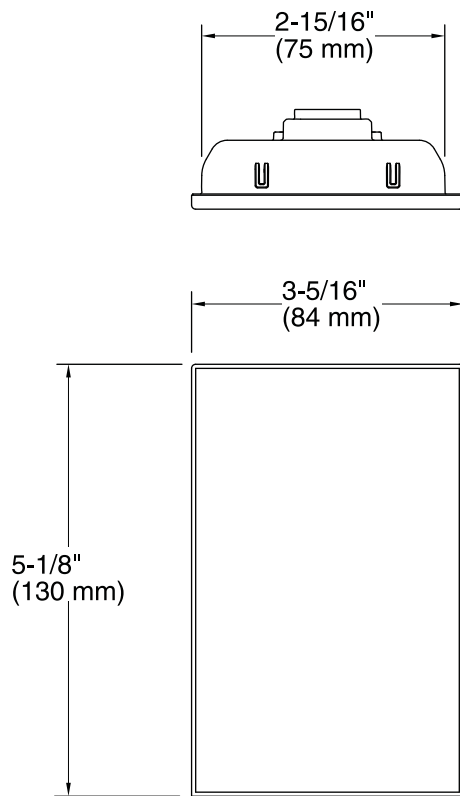
Loose component/s: 25 ft(7.6M) RJ45 cable and coupler.



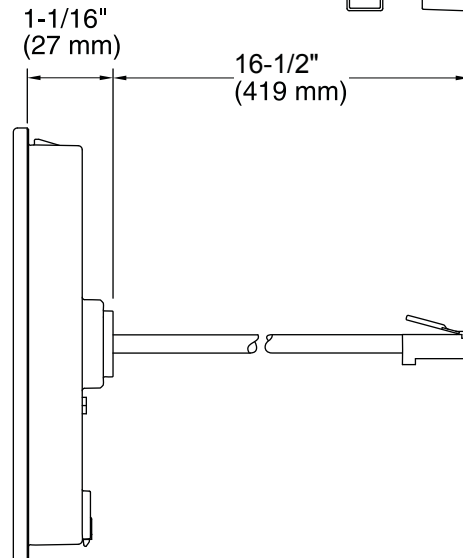
Codes/Standards

UL 1951
CSA C22.2 No. 14
CSA C22.2 No. 68

See website for detailed warranty information.



RJ45 Coupler



Technical Information

All product dimensions are nominal.

Notes

Install this product according to the installation guide.

CAUTION: Risk of product damage. The digital interface is rated to operate in temperatures up to 140°F (60°C). Do not install where the temperature may exceed 140°F (60°C).

CAUTION: Risk of product damage. Do not install the digital interface above the steamhead of a steam unit.

Features

- For surface mounting DTV+ Digital Interface.
- Available in range of finishes to coordinate with other shower fittings and bathroom aesthetics.

Material

- All metal construction.

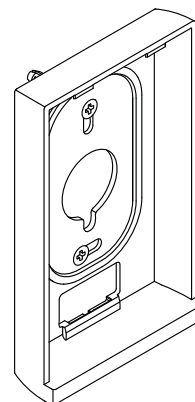
Installation

- Surface mount installation on finished wall surface.

Required Accessories

K-99693 Digital Interface

Loose component/s: UI removal tool.



Codes/Standards

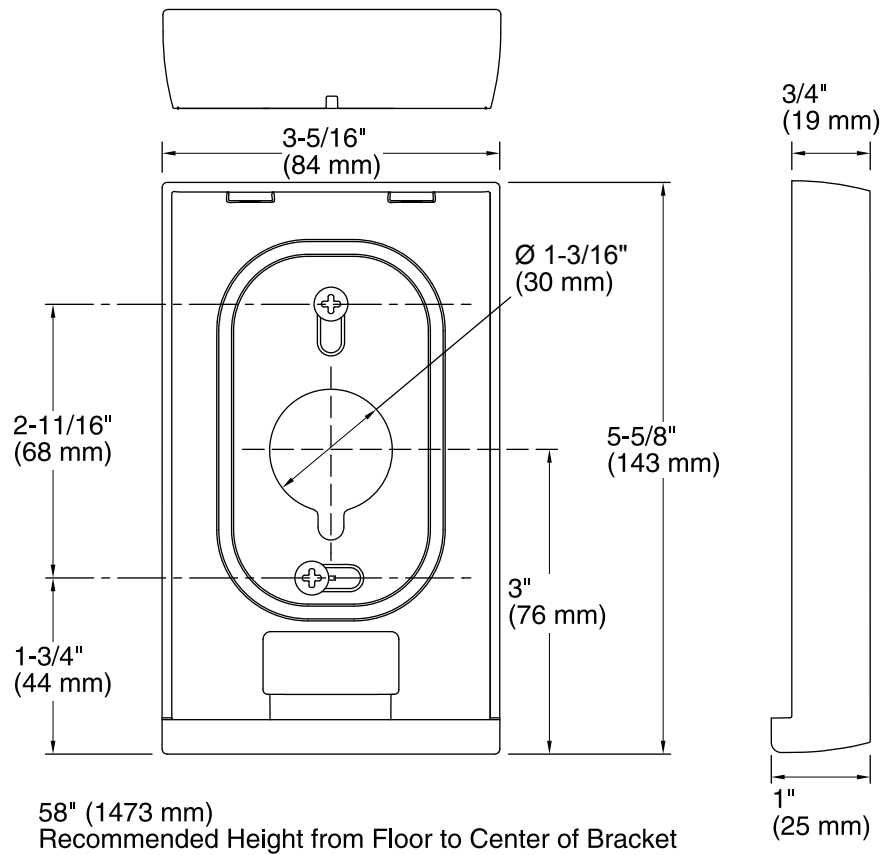
None Applicable

See website for detailed warranty information.

Available Color/Finishes

Color tiles intended for reference only.

Color	Code	Description
	CP	Polished Chrome
	SN	Vibrant® Polished Nickel
	BN	Vibrant® Brushed Nickel
	BL	Matte Black



Technical Information

All product dimensions are nominal.

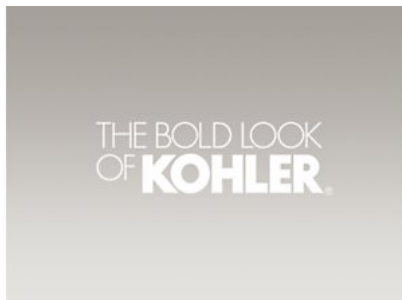
Notes

Install this product according to the installation guide.



Have Questions?
Call 1-800-4KOHLER | Visit Us at Kohler.com

DTV+™ digital three-port thermostatic valve K-



DTV+™ digital three-port thermostatic valve K-

Product Highlights

Color / Finish

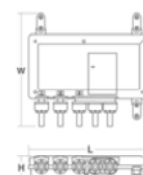
NA

For custom showering applications, this valve elevates your showering experience through the power of technology, giving you more options for cleansing and relaxation than ever. Digital thermostatic technology provides accurate, precise, and consistent temperature control. This precision-engineered, best-in-class digital thermostatic valve is designed for use with the DTV+ digital system, and its easy plug-and-go design makes installation simple. With three independently controllable outlet ports, this valve is ideally suited for applications where up to three shower outlets are required. Additionally, with the DTV+ system, this valve can also be used in combination with a second digital valve to provide either additional outlets or to deliver two different water temperatures at the same time.

Features

- Designed to work with a DTV+ digital system either individually or with a second digital valve (two, three, or six-port valve).
- For use in either showering and/or bathing applications.
- Up to 13 gpm (gallons per minute) maximum flow rate with maximum flow of 8.0 gpm from one outlet.
- 1/2-inch hot/cold supply inlets.
- Three independently controllable 1/2-inch outlets.
- Pre-wired with three-prong plug for connection to 110v AC receptacle.
- Mounts within standard 2- by 4-inch walls.
- Requires K-99695 DTV+ system controller module (sold separately).

Dimensions



Notes:

*All prices are Manufacturer's Suggested List Price in U.S. dollars. The price you pay at your local supply outlet may be different than the Manufacturer's Suggested List Price. These prices supersede previous prices and are subject to change without notice. These prices do not include shipping. Any sales tax applicable will be added to the prices.

Due to the differences in monitors, technical factors, and characteristics of some of our finishes, the colors shown here cannot be represented with all their true qualities. The color titles should only be considered a guide.

ABOVE GRADE FLASHING DRAIN**863 series****SPECIFICATION**

Sioux Chief 863 Series above grade flashing drain shall be used where necessary in drainage systems. Drain shall have an invertible flashing collar and a Sch. 40 hub connection which conforms to ASTM D2665 or D2661. Strainer shall be heel-proof and meet all load requirements for intended use.

MATERIALS

ring/strainer: nickel-bronze, brass, 304 stainless steel
 top housing: ABS
 flashing collar: ABS
 adapter body: ABS or PVC

STRAINER LOAD RATING

nickel-bronze: 1,000 lbs. (light duty, pedestrian traffic)
 brass: 1,000 lbs. (light duty, pedestrian traffic)
 stainless steel: 2,000 lbs. (light duty, pedestrian traffic)

STRAINER FREE AREA

standard top: 12.75 in²
 large top: 16.4 in²

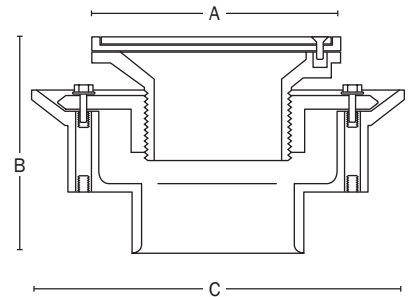
DIMENSIONS

A: ring/strainer diameter 5 $\frac{7}{8}$ " or 7"
 B: adjustable height
 standard top 4 $\frac{3}{8}$ " – 6 $\frac{3}{8}$ "
 large top 4 $\frac{1}{2}$ " – 6 $\frac{1}{2}$ "
 C: flange diameter 8 $\frac{1}{2}$ "
 D: trap primer port for $\frac{1}{2}$ " FIP

Item # Submitted	_____
Job Name	_____
Location	_____
Engineer	_____
Contractor	_____
PO#	_____ TAG _____



863-43NQ



Create Item Number

863-ABCD

e.g. 863-435SQ = 3" PVC Sch. 40 hub connection and standard, square, stainless steel ring and strainer

A ADAPTER

- ☐ 3 ABS adapter body
☐ 4 PVC adapter body

B CONNECTION / TOP SIZE

- ☐ 2 2" conn. / large top
☐ 25 2" conn. / standard top
☐ 3 3" conn. / large top
☐ 35 3" conn. / standard top
☐ 4 4" conn. / large top
☐ 45 4" conn. / standard top

C RING & STRAINER

- ☐ BQ square brass¹
☐ NQ square nickel-bronze
☐ SQ square stainless steel²

¹ Available with large top only² Standard top size available on 2" and 3" conn. models only**D OPTIONS (FACTORY INSTALLED)**

- ☐ V vandal-resistant strainer screws
☐ H hinged strainer¹
☐ T tapped $\frac{1}{2}$ " FIP trap primer port

¹ Available on large nickel-bronze or stainless steel strainers only**ACCESSORIES**

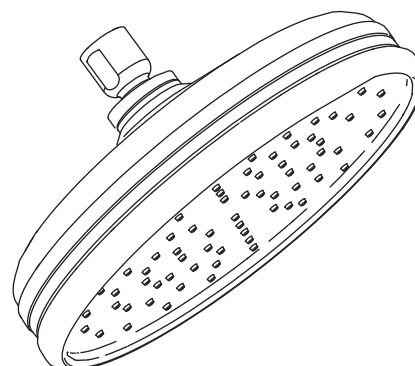
- ☐ 863-FA round aluminum cond. funnel
☐ 863-FN round nickel cond. funnel
☐ 863-FNO oval nickel cond. funnel
☐ 842-UM stainless debris screen

TRADITIONAL ROUND

Features

- Single-function Rain showerhead
- MasterClean™ spray nozzles prohibit mineral buildup for easy cleaning
- Katalyst™ Spray Technology with air induction ball joint (patent pending)
- Optimized sprayface for maximum performance
- Solid brass construction
- 2.5 gallon (9.5 L) per minute flow rate
- 1/2" - 14 NPT connection

RAIN SHOWERHEAD
K-13692
ALSO K-13693, K-13694



Codes/Standards Applicable

Specified model meets or exceeds the following:

- ASME A112.18.1/CSA B125.1
- Energy Policy Act of 1992

Colors/Finishes

- CP: Polished Chrome
- Other: Refer to Price Book for additional colors/finishes

Accessories

- CP: Polished Chrome
- Other: Refer to Price Book for additional colors/finishes

Specified Model

Model	Description	Size	Nozzles	Colors/Finishes	
K-13692	Rain showerhead	8-7/16" (214 mm)	78	<input type="checkbox"/> CP	<input type="checkbox"/> Other_____
K-13693	Rain showerhead	10-7/16" (265 mm)	78	<input type="checkbox"/> CP	<input type="checkbox"/> Other_____
K-13694	Rain showerhead	12-7/16" (316 mm)	102	<input type="checkbox"/> CP	<input type="checkbox"/> Other_____

Optional Accessories					
K-7392	12" (305 mm) straight ceiling-mount shower arm and flange			<input type="checkbox"/> CP	<input type="checkbox"/> Other_____
K-7394	6" (152 mm) straight ceiling-mount shower arm and flange			<input type="checkbox"/> CP	<input type="checkbox"/> Other_____
K-7396	3" (76 mm) straight ceiling-mount shower arm and flange			<input type="checkbox"/> CP	<input type="checkbox"/> Other_____
K-10124	Right-angle shower arm and flange			<input type="checkbox"/> CP	<input type="checkbox"/> Other_____

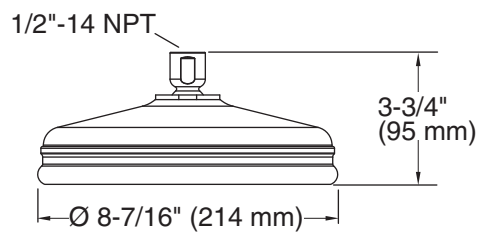
Product Specification

The single function rain showerhead shall be made of solid brass construction with MasterClean™ spray nozzles to prohibit mineral build up for easy cleaning. Showerhead shall have Katalyst™ spray technology with air induction ball joint (patent pending) and optimized spray face for maximum performance. Showerhead shall have a flow rate of 2.5 gallons (9 L) per minute. Showerhead shall have a 1/2"-14 NPT connection. Showerhead shall be Kohler Model K-13692-_____, K-13693-_____ or K-13694-_____.

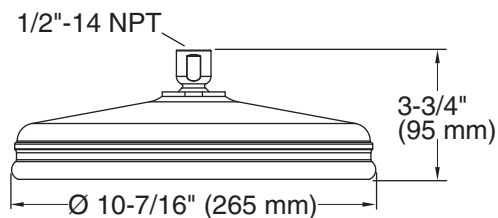
TRADITIONAL ROUND

Installation Notes

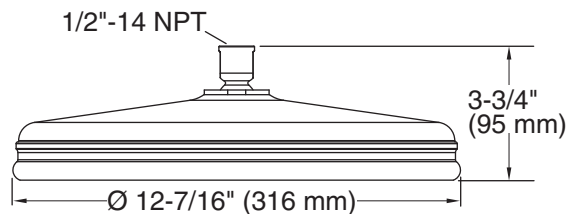
Install this product according to the installation guide.



K-13692



K-13693



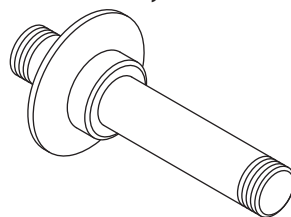
K-13694

Product Diagram

Features

- Brass construction
- 1/2" NPT connections
- Ceiling-mount
- Includes flange
- 3" (76 mm) or 6" (152 mm) or 12" (305 mm) straight shower arm

SHOWER ARM **K-7392** ALSO K-7394, K-7396



Codes/Standards Applicable

Specified model meets or exceeds the following:

- ASME A112.18.1/CSA B125.1

Colors/Finishes

- CP: Polished Chrome
- Other: Refer to Price Book for additional colors/finishes

Specified Model

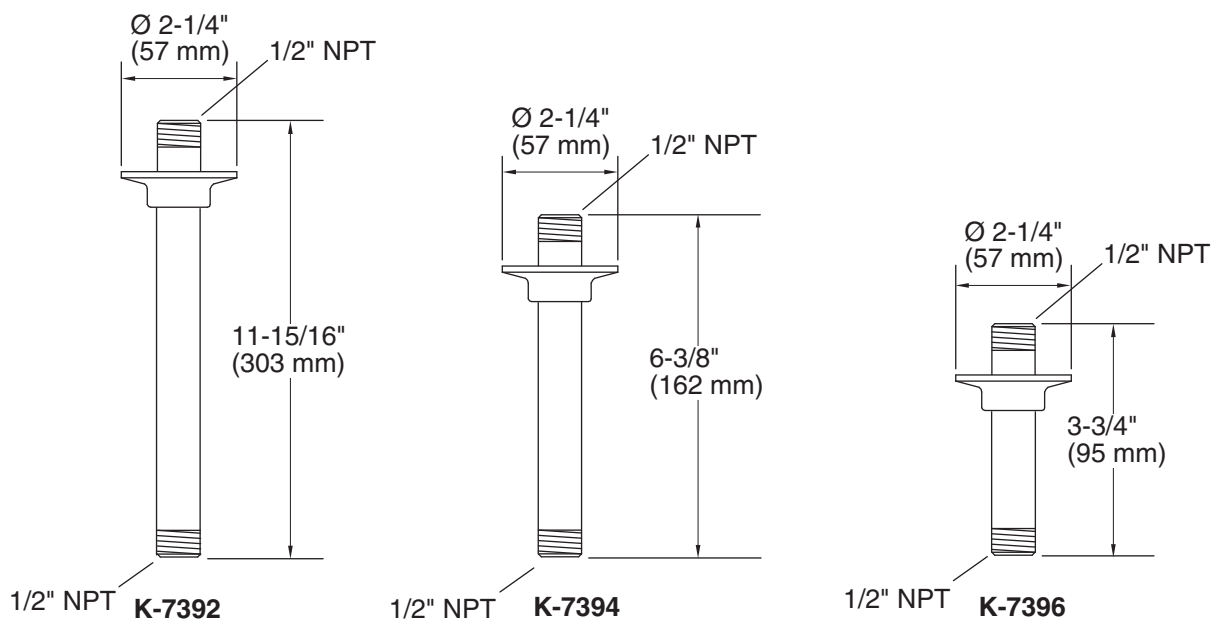
Model	Description	Color/Finish	
K-7392	12" (305 mm) shower arm	<input type="checkbox"/> CP	<input type="checkbox"/> Other _____
K-7394	6" (152 mm) shower arm	<input type="checkbox"/> CP	<input type="checkbox"/> Other _____
K-7396	3" (76 mm) shower arm	<input type="checkbox"/> CP	<input type="checkbox"/> Other _____

Product Specification

The ceiling-mount shower arm and flange shall be of brass construction. Shower arm shall have a 3" (76 mm) or 6" (152 mm) or 12" (305 mm) straight shower arm. Shower arm shall have a 1/2" NPT connection at both ends. Shower arm shall be Kohler Model K-7392-____ or K-7394-____ or K-7396-____.

Installation Notes

Install this product according to the installation guide.



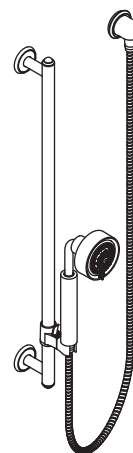
Product Diagram

Features

- Finish is engineered to resist corrosion and daily wear
- Ergonomic handshower pivots for targeted hydromassage or rinsing the shower enclosure
- Multifunction handshower with wide coverage, massage, soft aerated, and reduced flow options
- MasterClean™ spray nozzles to prohibit mineral build-up for easy cleaning
- Covered by KOHLER lifetime limited warranty
- Handshower offers 2.5 gal/min (9.5 l/min) maximum flow rate
- Complements Stillness® and Purist® faucets and accessories
- Includes handshower, slidebar, supply elbow, and 60" (1524 mm) metal shower hose
- ADA non-positive shut-off
- 30" (762 mm) slidebar length offers a custom shower at various heights

CONTEMPORARY HANDSHOWER KIT K-9059

ADA



Codes/Standards Applicable

Specified model meets or exceeds the following:

- ADA
- ICC/ANSI A117.1
- ASME A112.18.1/CSA B125.1

Colors/Finishes

- CP: Polished Chrome
- BN: Brushed Nickel

Specified Model

Model	Description	Colors/Finishes	
K-9059	Contemporary handshower kit	<input type="checkbox"/> CP	<input type="checkbox"/> BN

Product Specification

The handshower kit shall be 30" (762 mm) in length offering a custom shower at various heights. Kit shall include handshower, slidebar, supply elbow, and 60" (1524 mm) metal shower hose. Kit shall feature a finish engineered to resist corrosion and daily wear. Kit shall feature ergonomic handshower which pivots for targeted hydromassage or rinsing the shower enclosure. Kit shall feature multifunction handshower with wide coverage, massage, soft aerated, and reduced flow options. Handshower offers 2.5 gal/min (9.5 l/min) maximum flow rate. Handshower shall provide ADA non-positive shut-off. Kit shall feature MasterClean spray nozzles to prohibit mineral build-up for easy cleaning. Kit shall complement Stillness and Purist faucets and accessories, and shall be covered by the KOHLER lifetime limited warranty. Handshower kit shall be Kohler Model K-9059-_____.

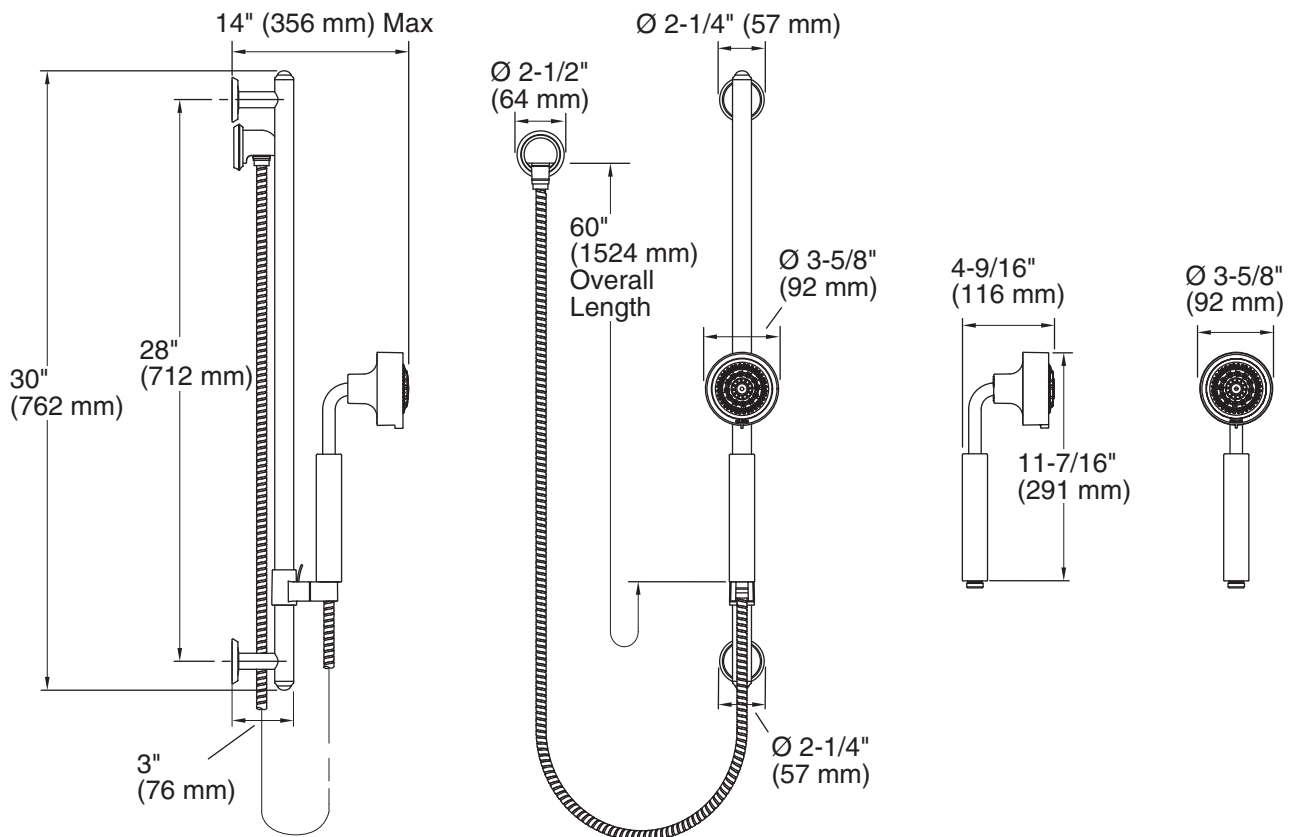
Installation Notes

Install this product according to the installation guide.

IMPORTANT! The sidebar must be mounted to stud framing at both the top and bottom mounting locations. Do not use or depend on plastic wall anchors to attach the sidebar.

Plumbing codes may require an atmospheric vacuum breaker (such as the KOHLER K-9660) be installed in-line to handshowers. Consult with local plumbing codes.

Reduced flow spray option provides non-positive shut-off required by 2010 ADA Standards for Accessible Design, Section 607.6 Spray Unit and Water (baths) and Section 608.6 Spray Unit and Water (Showers).



Product Diagram

WATERTILE™ ROUND

Features

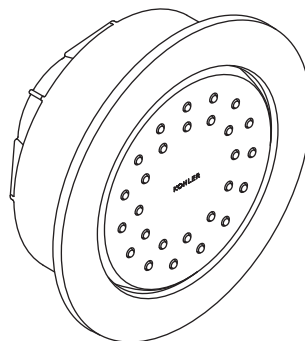
- 1/2" NPT connections
- Available 27- or 54-nozzle configurations
- 2 gallons (7.6 L) per minute flow rate at 80 psi (551.6 kPa)

BODYSPRAY
K-8013
ALSO K-8014

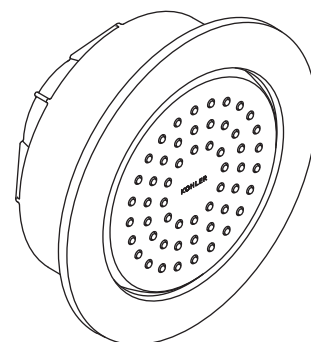
Codes/Standards Applicable

Specified model meets or exceeds the following:

- ASME A112.18.1/CSA B125.1
- Energy Policy Act of 1992



K-8013



K-8014

Colors/Finishes

- CP: Polished Chrome
- Other: Refer to Price Book for additional colors/finishes

Specified Model

Model	Description	Colors/Finishes	
K-8013	27-nozzle bodyspray	<input type="checkbox"/> CP	<input type="checkbox"/> Other_____
K-8014	54-nozzle bodyspray	<input type="checkbox"/> CP	<input type="checkbox"/> Other_____

Product Specification

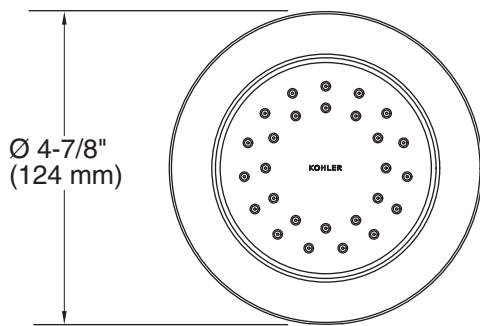
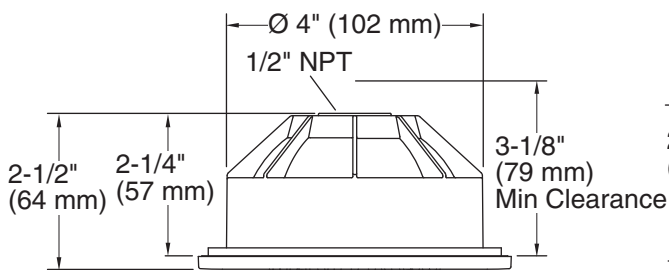
Bodyspray shall feature 27-nozzle or 54-nozzle spray configurations. Product flow rate shall be 2 gallons (7.6 L) per minute maximum at 80 psi (551.6 kPa). Bodyspray shall have 1/2" NPT connection. Bodyspray shall be Kohler Model K-____-____.

WATERTILE™ ROUND

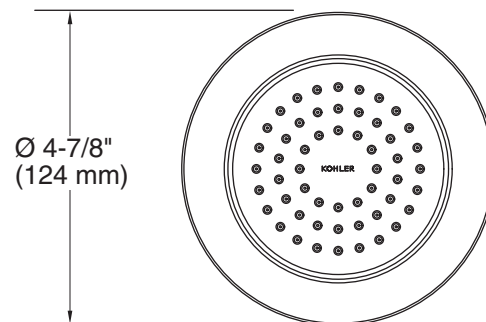
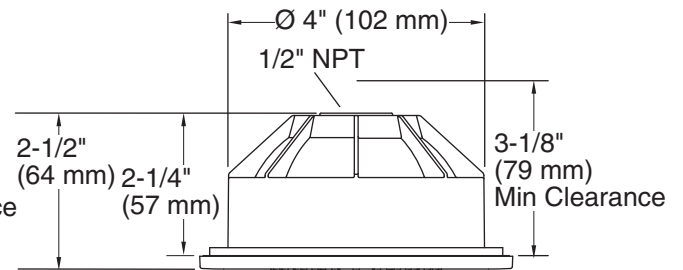
Installation Notes

Install this product according to the installation guide.

K-8013



K-8014



Product Diagram



Persuade® Circ

Dual Flush Toilet

K-3753

Features

- Vitreous china.
- Two-piece toilet.
- Comfort Height® Elongated bowl.
- Dual Flush flushing system.
- Includes top-mount dual flush trip lever.
- 1.6 gpf (6.0 lpf) or 1.0 gpf (3.8 lpf).
- Fully skirted trapway.
- 12" (305 mm) rough-in.
- Supply line included.
- 4-1/2" (114 mm) x 5-3/4" (146 mm) water area.
- 28-5/8" (727 mm) x 14-3/16" (360 mm) x 33-3/4" (857 mm).
- Floor mount / Floor outlet.

Recommended Accessories

K-4650 Toilet Seat
K-4774 Toilet Seat
K-7659 Angle Stop
K-7668 Straight Stop

Components

Product includes:

K-4353 Toilet Bowl
K-4442 Toilet Tank

Additional included component/s: Tank cover, Dual flush push buttons, Installation kit, Installation template, Tank accessory pack, and Toilet seat.



Codes/Standards







ASME A112.19.2/CSA B45.1
ASME A112.19.14
DOE - Energy Policy Act 1992
EPA WaterSense®

KOHLER® One-Year Limited Warranty

See website for detailed warranty information.

Available Color/Finishes

Color tiles intended for reference only.

Color	Code	Description
	0	White
	96	Biscuit
	47	Almond
	NY	Dune
	95	Ice™ Grey
	7	Black Black™

Features

- Complements Purist® Suite

ACCESSORIES K-14435

Codes/Standards Applicable

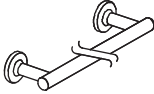
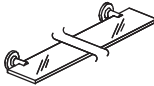




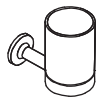
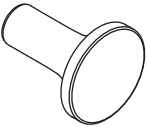
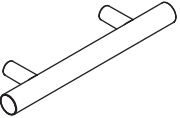
Specified model meets or exceeds the following:

- None applicable

Colors/Finishes

- CP: Polished Chrome
- Other: Refer to Price Book for additional colors/finishes

Specified Model

Model	Description		Colors/Finishes	
K-14435	18" (457 mm) towel bar		<input type="checkbox"/> CP	<input type="checkbox"/> Other_____
K-14436	24" (610 mm) towel bar		<input type="checkbox"/> CP	<input type="checkbox"/> Other_____
K-14437	30" (762 mm) towel bar		<input type="checkbox"/> CP	<input type="checkbox"/> Other_____
K-14440	Glass shelf		<input type="checkbox"/> CP	<input type="checkbox"/> Other_____
K-14441	Towel ring		<input type="checkbox"/> CP	<input type="checkbox"/> Other_____
K-14443	Robe hook		<input type="checkbox"/> CP	<input type="checkbox"/> Other_____
K-14444	Toilet tissue holder		<input type="checkbox"/> CP	<input type="checkbox"/> Other_____
K-14445	Soap dish		<input type="checkbox"/> CP	<input type="checkbox"/> Other_____
K-14447	Tumbler and holder		<input type="checkbox"/> CP	<input type="checkbox"/> Other_____
K-14484	Knob cabinet hardware		<input type="checkbox"/> CP	<input type="checkbox"/> Other_____
K-14485	Pull cabinet hardware		<input type="checkbox"/> CP	<input type="checkbox"/> Other_____

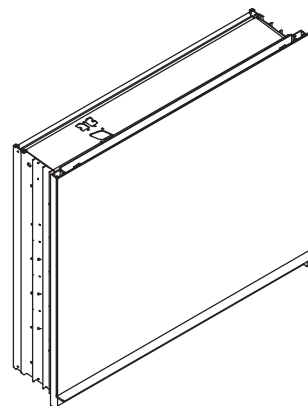
Product Specification

Product shall complement the Purist Suite. Product shall be Kohler Model K-____-____.

Features

- Unique vertically opening, no-swing door allows for zero clearance installations
- Position hold door-opening mechanism lets you open the door as low or as high as you need
- 60% recycled aluminum construction
- Rust-free anodized aluminum construction, no formaldehyde resins
- 1/4" (6 mm) thick adjustable clear glass shelves
- Aluminum handle for effortless two-finger lifting
- Interior mirror
- Electric column with six 1500 watt, 120VAC, 15A power outlets
- Discreet wiring enclosure for clutter-free cable management
- Auto-on high power, low wattage LED interior lighting
- 2725 cubic inches (44,655 cc) storage capacity with split compartment for maximum flexibility
- Recessed (frame and handle project 1-7/8" [4.8 cm]), semi-recessed 4" (10.2 cm) in wall (cabinet, frame and handle project 3-7/8" [9.8 cm]), or surface mount (cabinet, frame and handle project 7-5/8" [19.4 cm])
- Night light in handle provides optimal lighting for nighttime needs
- Mirror defogger allows mirror use even in a humid environment

UC3027FPL



Codes/Standards Applicable

Specified model meets or exceeds the following:

- ETL listed
- Meets ADA requirements for door opening force for sliding doors

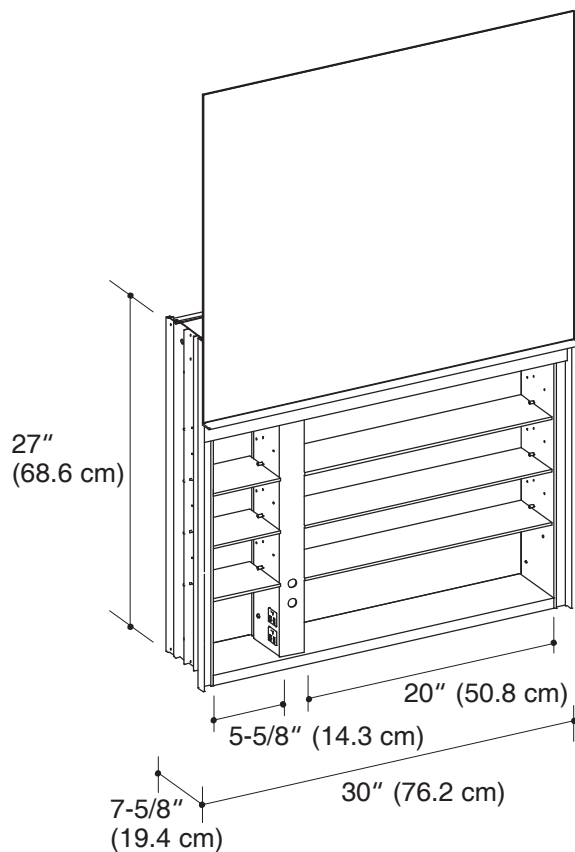
Specified Model

Model	Description	
UC3027FPL	Uplift cabinet with electric, night light and defogger	<input type="checkbox"/>
Required Accessories - For Surface Mount and Semi-Recessed Installations Only		
USK27D6P	Uplift mirrored side kit - surface mount	<input type="checkbox"/>
USK27D6SR	Uplift mirrored side kit - semi-recess mount	<input type="checkbox"/>
Optional Accessories		
UORGshelf20	Uplift 20" (50.8 cm) organizer shelf	<input type="checkbox"/>
TVMOUNT20	TV mount (accommodates up to 19" [48.3 cm] diagonal LCD television, width not to exceed 19-1/2" [49.5 cm])	<input type="checkbox"/>
POMM	Pull-out 3X magnifying mirror	<input type="checkbox"/>
UBK30D6A	Aluminum top and bottom kit for surface mount installations (required when top or bottom is visible)	<input type="checkbox"/>
UBK30D6ASR	Aluminum top and bottom kit for semi-recessed installations (required when top or bottom is visible)	<input type="checkbox"/>
UFLPAL	Uplift pendant light with night light	<input type="checkbox"/>
UFLWAL	Uplift wall sconce with night light	<input type="checkbox"/>

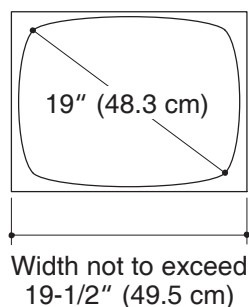
UPLIFT™ CABINET

Technical Information

Roughing-in opening (fully recessed)	28-3/4" (73 cm) width x 26-1/4" (66.7 cm) height x 6" (15.2 cm) depth
Roughing-in opening (semi-recessed)	28-3/4" (73 cm) width x 26-1/4" (66.7 cm) height x 4" (10.2 cm) depth



TV Maximum Size



Installation Notes

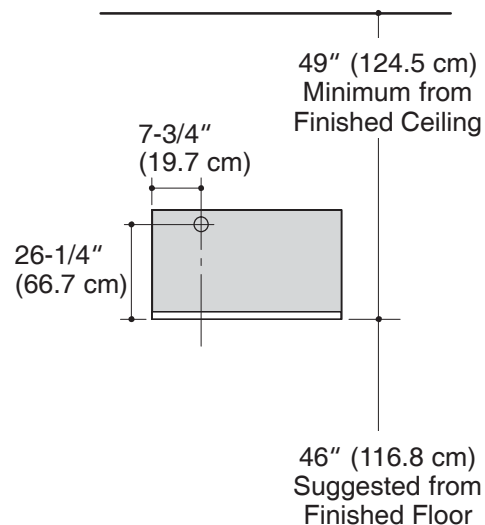
Install this product according to the installation guide.

Secure the screws (provided) to a stud to avoid possible property and product damage. If this is not possible, anchors (provided) must be inserted before installing the screws.

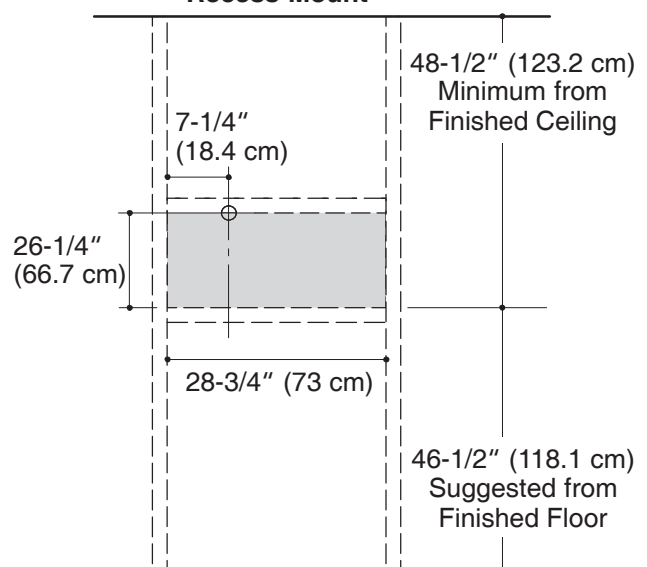
This cabinet can be surface mounted, semi-recessed or fully recessed. To semi-recess, cabinets require 4" (10.2 cm) deep opening (2x4 wall). Fully recessed cabinets require 6" (15.2 cm) deep opening (2x6 wall).

Electrical rough-in cable should extend 24" (61 cm) out of wall. Other cables should extend 48" (121.9 cm) from wall.

Surface Mount



Recess Mount



Product Diagram