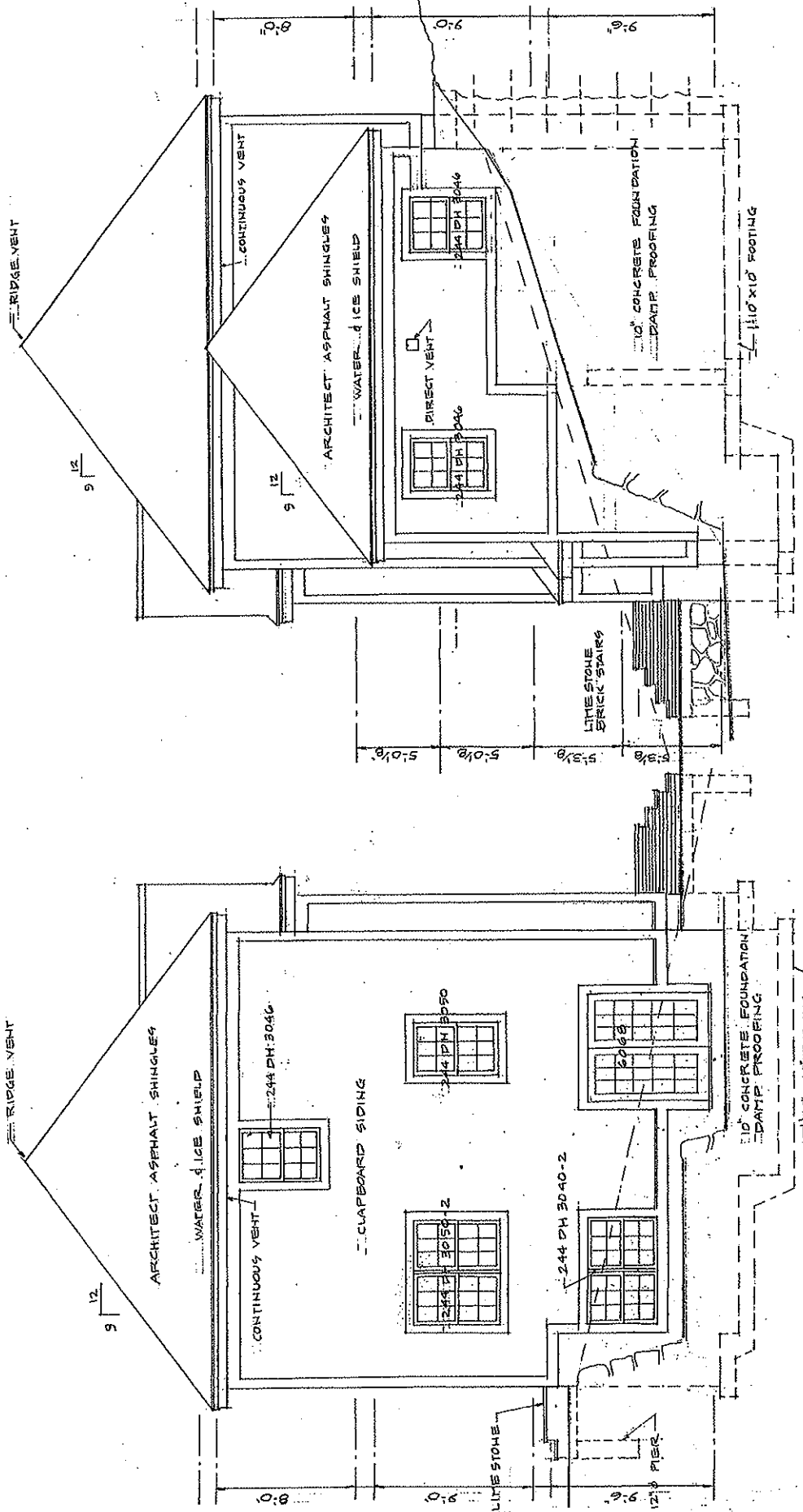


FRONT ELEVATION

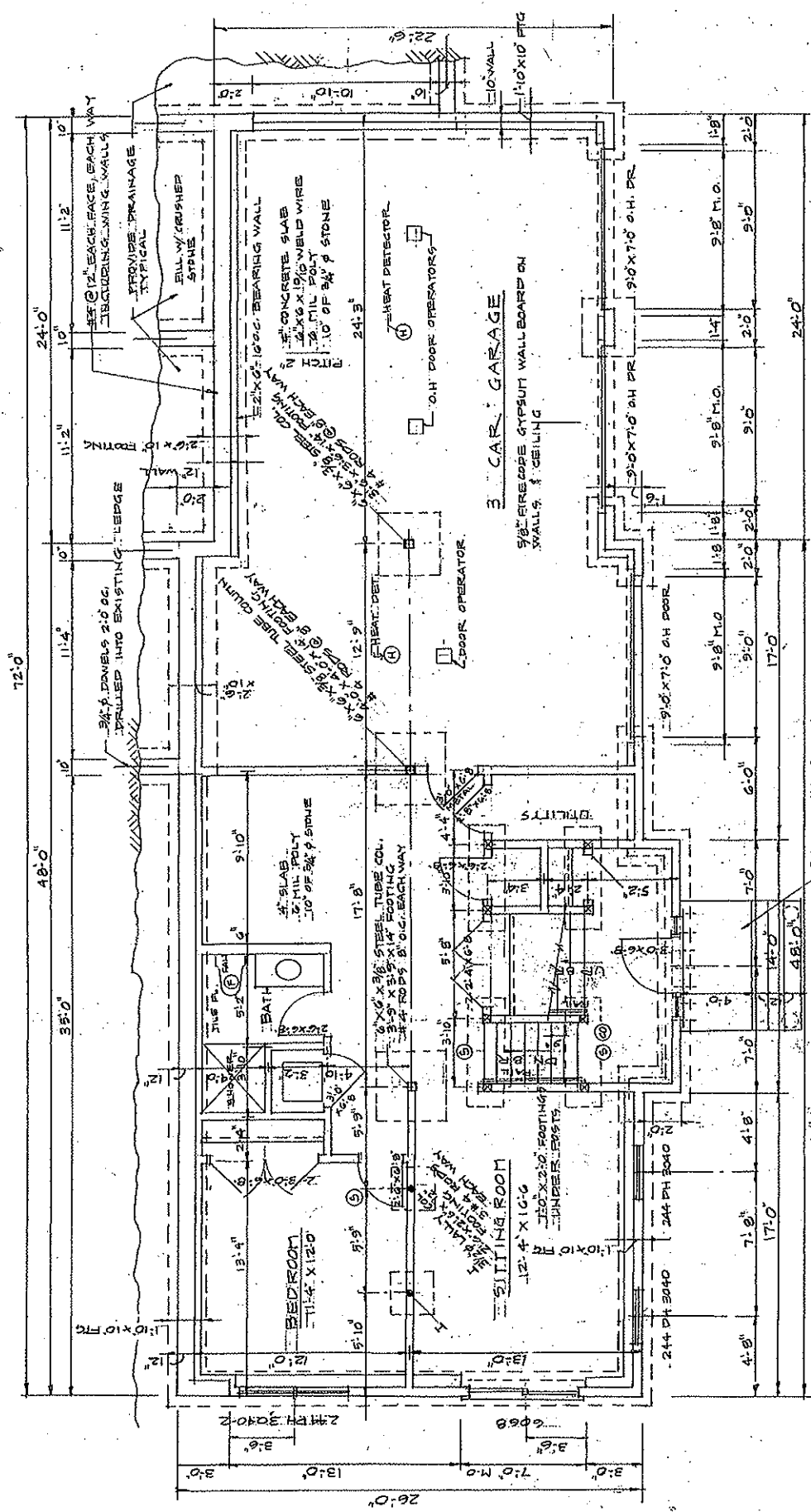
SCALE 1/4"=1'-0"



RIGHT SIDE ELEVATION

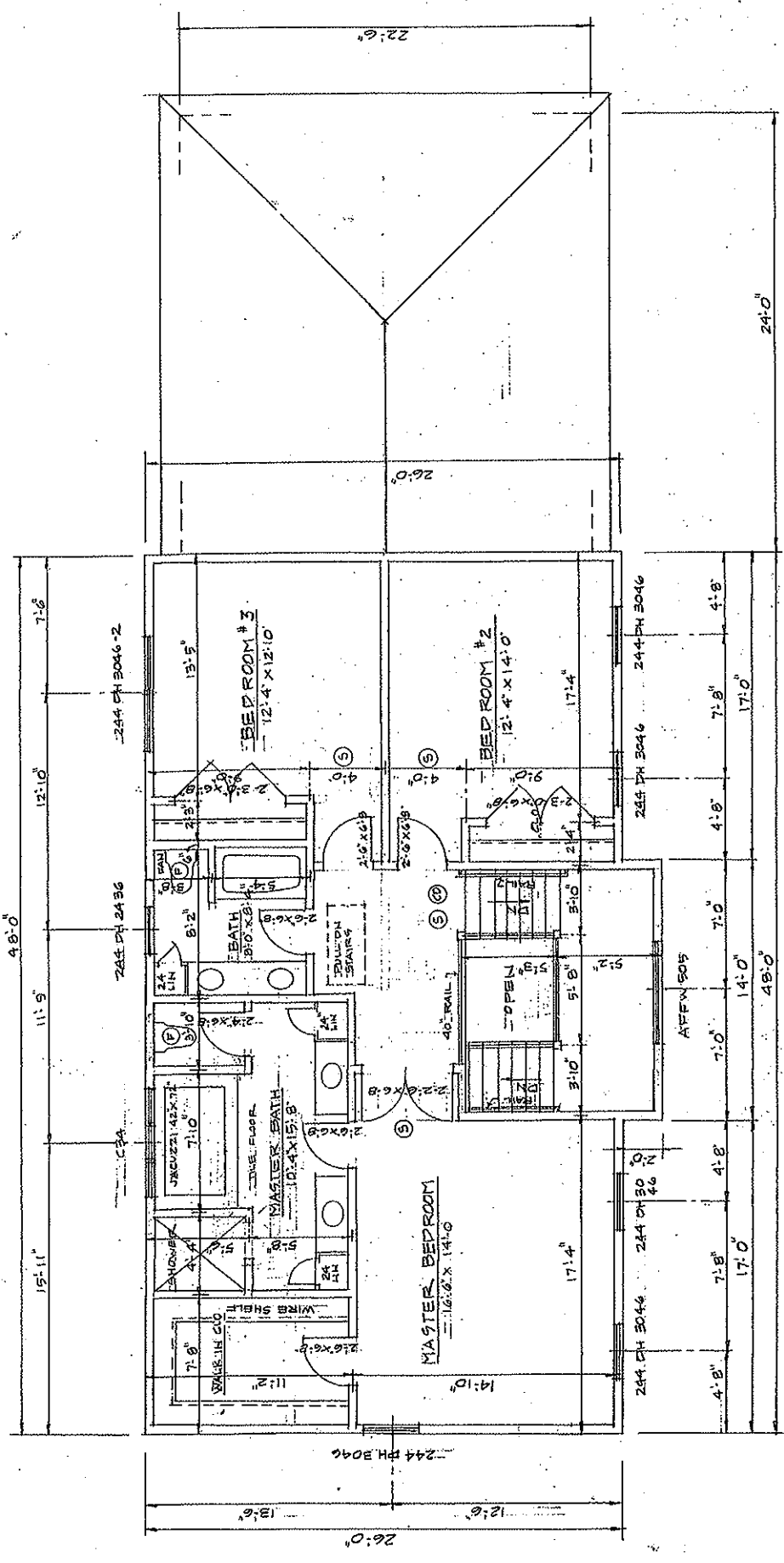
LEFT SIDE ELEVATION

SCALE 1/4"=1'-0"



BRICK STAIRS ON A
 8\"/>

BASEMENT / FOUNDATION PLAN
 SCALE 1/4"=1'-0"



SECOND FLOOR PLAN
 SCALE 1/4"=1'-0"